

BEST OF
ProMetall
REFERENCES



Design instead of average

www.prometall.at

ProMetall

Design instead of average

At ProMetall our day-to-day life is determined by creativity. Yet, nowadays, creativity alone is not enough anymore. We realised long ago that individuality is key to our success and your success. This applies to the smallest filter or sound insulation element in the automotive sector, protective gratings for machines and complete façade designs. We score through creativity and individuality and work for you on a domestic and international basis. Our extensive product range, including a wide range of standard products, is a contributing factor. All these components ensure our success on the international competitors' market.

We are committed to the creative and specific implementation of customers' wishes; this is ensured by our seven product categories perforated metal sheets, expanded metal, wire mesh, profile edgings, gratings, patterned metal sheets and architectural wire cloth. Our vast experience and years of professional know-how allow us to realise our partners' excellent ideas, especially those of architects. This ensures that our customers' visual and technical wishes are perfectly realised with attention to detail, our partners' attractive plans are precisely installed, and the parts are manufactured individually, visually attractive and with technical precision.

Products that are tailor-made for each client in accordance with smart designs: this ensures the success of our customers in the extensive metal-processing sector.

ProMetall stands for: Design instead of average



There are countless variations of colours and perforations.

Every project gets its tailor-made look.

DI Bertold Henzler, Berlin



Contents

Best of ProMetall References

PERFORATED METAL SHEET

Reference 01	Project LEINER, Graz	Page 04–05
Reference 02	Project OEAMTC Salzburg	Page 06–07
Reference 03	Project Nursery Wilhelminenspital (Wilhelminen Hospital) Vienna	Page 08–09
Reference 04	Project Seestadt Aspern	Page 10–11
Reference 05	Project LKH (State hospital) Leoben	Page 12–13
Reference 06	Project Anton Freunschlaggasse, Vienna	Page 14–15

EXPANDED METAL

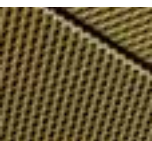
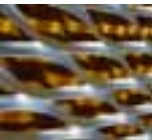
Reference 07	Project SC Fischapark, Wiener Neustadt	Page 16–17
Reference 08	Project AUVA Klagenfurt	Page 18–19
Reference 09	Project Motel One, 1010 Vienna	Page 20–21
Reference 10	Project OBI, Triester Strasse, 1100 Vienna	Page 22–23
Reference 11	Project CHS / VCT Villach	Page 24–25
Reference 12	Project TU (Technical University) Graz, BioMedTech	Page 26–27
Reference 13	Project SPAR Pottendorf	Page 28–29
Reference 14	Project GENERALI Arena Vienna	Page 30–31
Reference 15	Project Culture and Congress Centre Eisenstadt	Page 32–33

PATTERNED METAL SHEETS

Reference 16	Project Sternbrauerei (brewery) Riedenburg, Salzburg	Page 34–35
--------------	--	------------

ARCHITECTURAL WIRE CLOTH

Reference 17	Project WU Campus Vienna, library	Page 36–37
Reference 18	Project Restaurant SHIKI, Vienna	Page 38–39





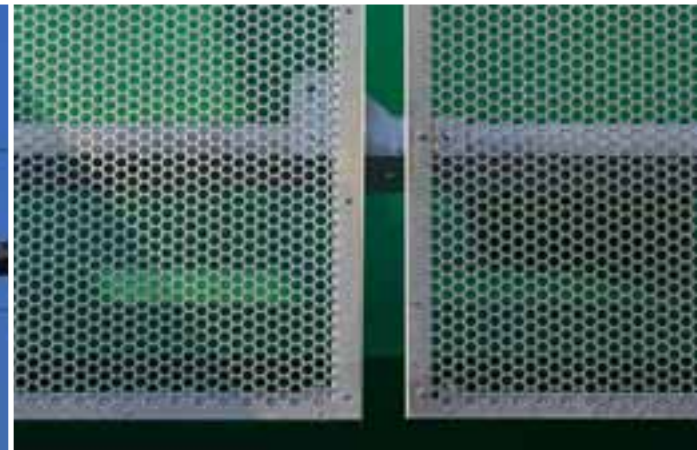
PERFORATED METAL SHEET Reference 01

Project: LEINER, Graz

Material: Perforated metal sheets with perforation
RT 20-25 / aluminium 4mm

Metal manufacturer: mglass gmbh, Steyregg

Architect: Arch.buero Peyker & Architektur Consult, Graz



PERFORATED METAL SHEET



PERFORATED METAL SHEET



PERFORATED METAL SHEET Reference 02

Project: **OEAMTC Salzburg**

Material: Perforated metal sheets with perforation
RU 5-12.5 / aluminium 2mm

Metal manufacturer: Griesser, Nenzing

Architect: SNP, Vienna



PERFORATED METAL SHEET



PERFORATED METAL SHEET Reference 03

Project: Nursery Wilhelminenspital, Vienna

Material: Perforated metal sheet with individual
"flower perforation" / steel-galvanised 3mm

Metal manufacturer: Stahlbau Gerger GmbH, St.Michael



PERFORATED METAL SHEET

ProMetall | Design instead of average

Page | 9



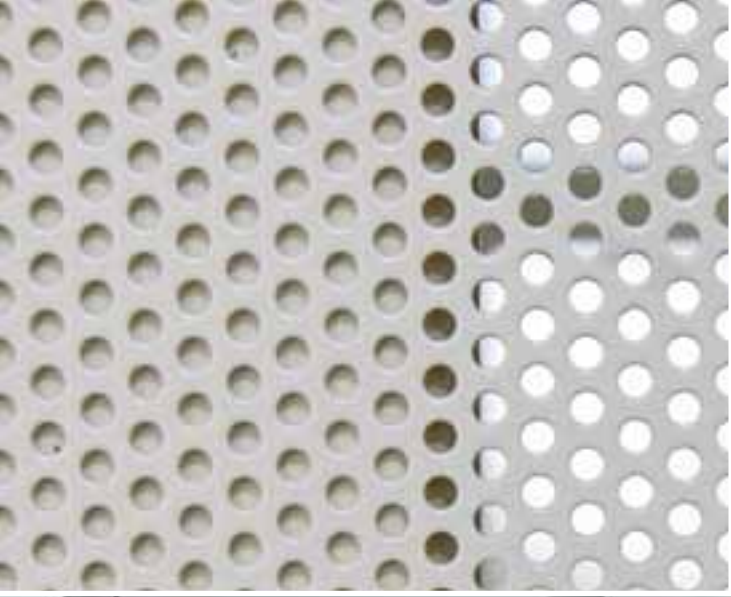
PERFORATED METAL SHEET Reference 04

Project: Seestadt Aspern, Vienna

Material: Perforated metal sheet
with perforation RT 3-5 / aluminium 2mm

Metal manufacturer: Novakovic, Marz

Architect: DI Albert Wimmer



PERFORATED METAL SHEET

ProMetall | Design instead of average

Page | 11



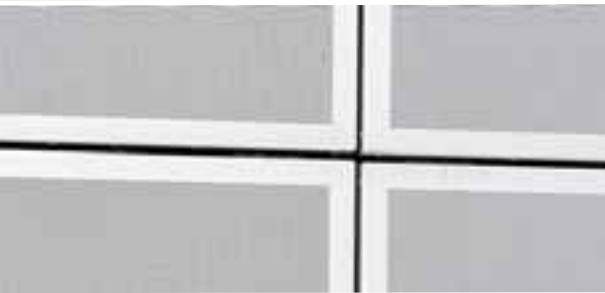
PERFORATED METAL SHEET Reference 05

Project: LKH Leoben (state hospital)

Material: Perforated metal sheets with perforation
RT 3-5 / aluminium 3mm

Metal manufacturer: SFL, Stallhofen





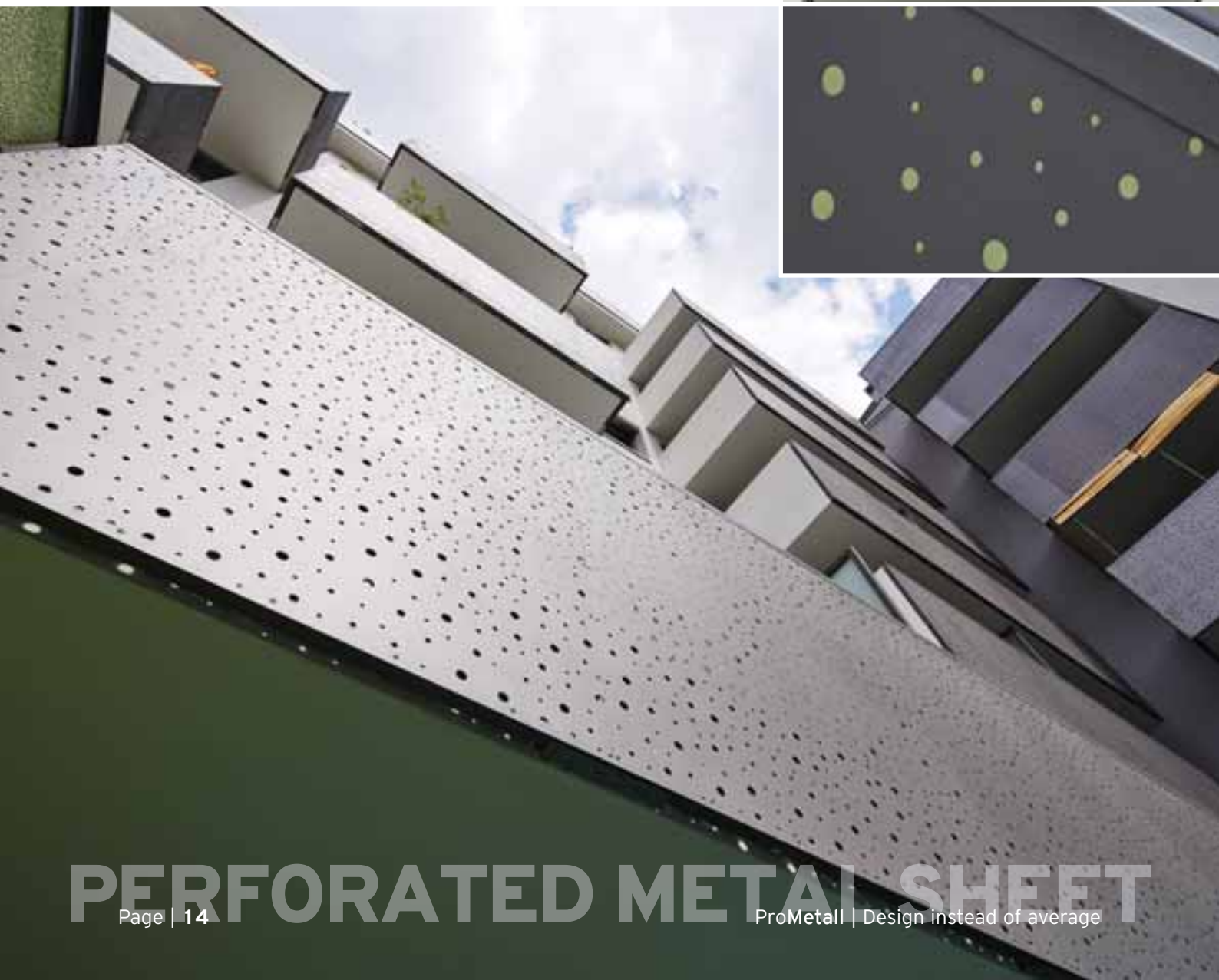
PERFORATED METAL SHEET Reference 06

Project: Anton Freunschlaggasse, Vienna

Material: Perforated metal sheets with individual "bubble perforation" / steel-galvanised 1.5 mm

Metal manufacturer: Wippel, Eisenstadt

Architect: steffel gressenbauer & partner, Vienna





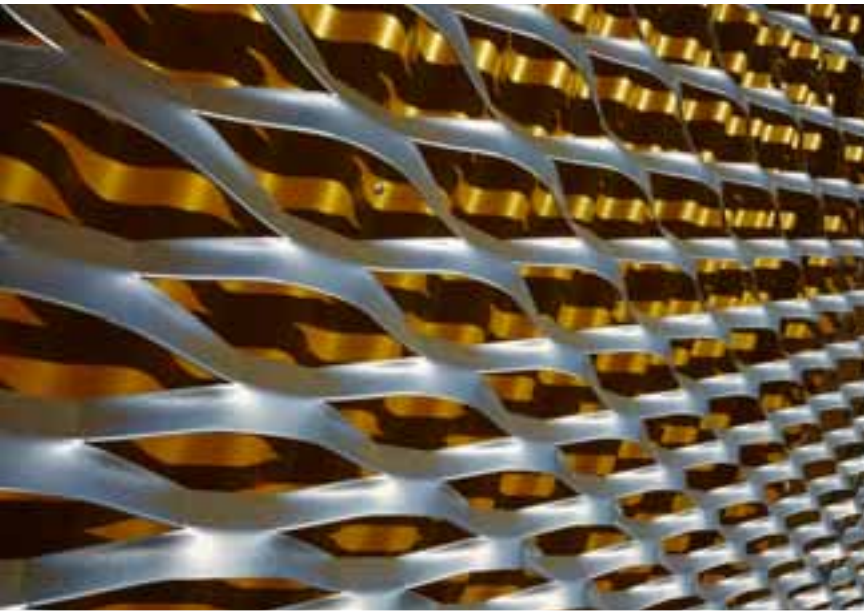
PERFORATED METAL SHEET

ProMetall | Design instead of average

Page | 15



EXPANDED METAL



EXPANDED METAL Reference 07

Project: SC Fischapark,
Wiener Neustadt

Material: Expanded metal type
"Salzburg" / aluminium 2mm

Metal manufacturer: SFL, Stallhofen

Architect: Architektur Consult, Vienna



EXPANDED METAL Reference 08

Project: AUVA Klagenfurt

Material: Expanded metal types
"Innsbruck" & "Zadar"
aluminium 2mm, anodised

Metal manufacturer: Starmann, Klagenfurt

Architect: PWP, Vienna





EXPANDED METAL

ProMetal | Design instead of average



EXPANDED METAL

EXPANDED METAL: Reference 09

Project: Motel One, 1010 Vienna

Material: Expanded metal type "Graz" / aluminium 3mm

Metal manufacturer: Hackl, Leopoldsdorf

Architect: BEHF, Vienna



EXPANDED METAL Reference 10

Project: OBI, Triester Strasse, 1 100 Vienna

Material: Expanded metal type "Celje" / aluminium 2mm

Metal manufacturer: SK Stahlbau, Vienna

Architect: Marschalek & Marschalek, Vienna





EXPANDED METAL



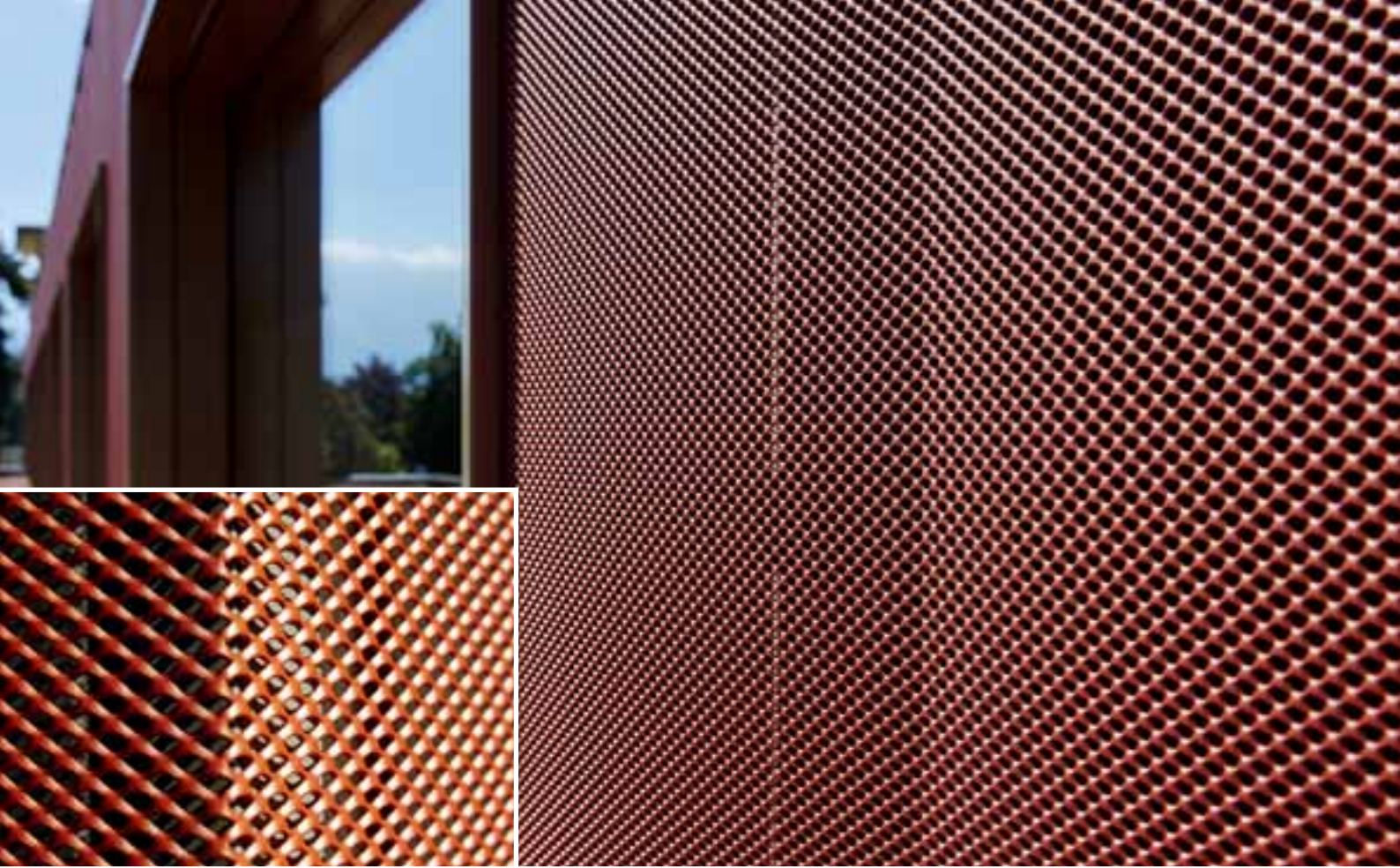
EXPANDED METAL Reference 11

Project: CHS / VCT Villach

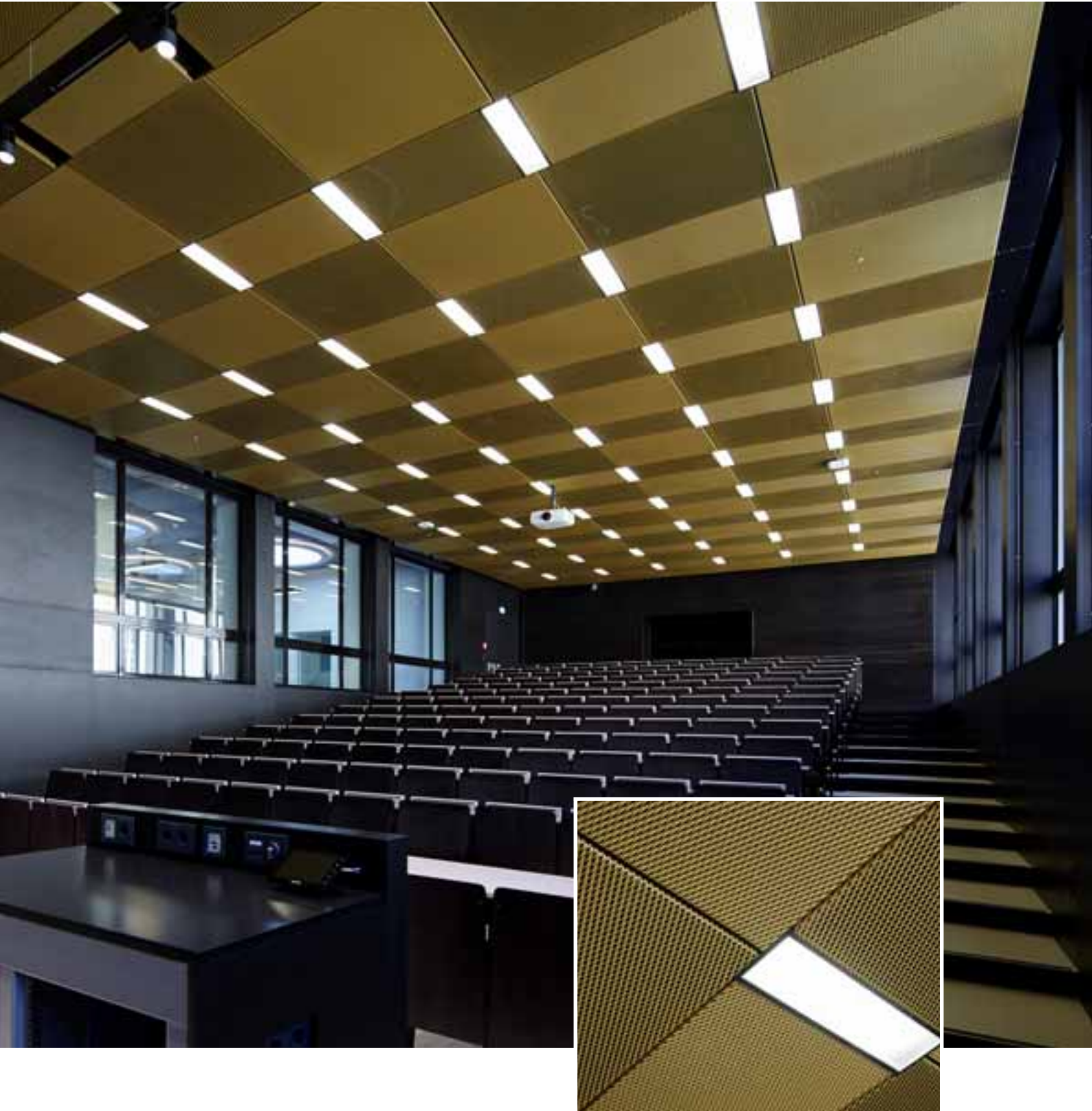
Material: Expanded metal type "Neunkirchen" / aluminium 2mm

Metal manufacturer: Wilhelmer, Kolbnitz

Architect: Gasparin Meier, Villach



EXPANDED METAL



EXPANDED METAL



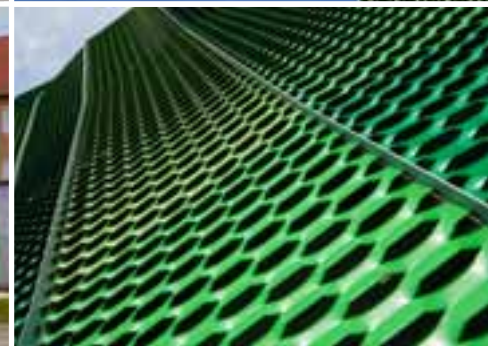
EXPANDED METAL Reference 12

Project: TU Graz, BioMedTech

Material: Expanded metal types "Lustenau", "Ansfelden",
"Mattersburg" / aluminium 1.5 - 2mm

Metal manufacturer: Fritscher, Hoersching

Architect: Gangoly & Kristiner, Kerstin Wissounig, Graz



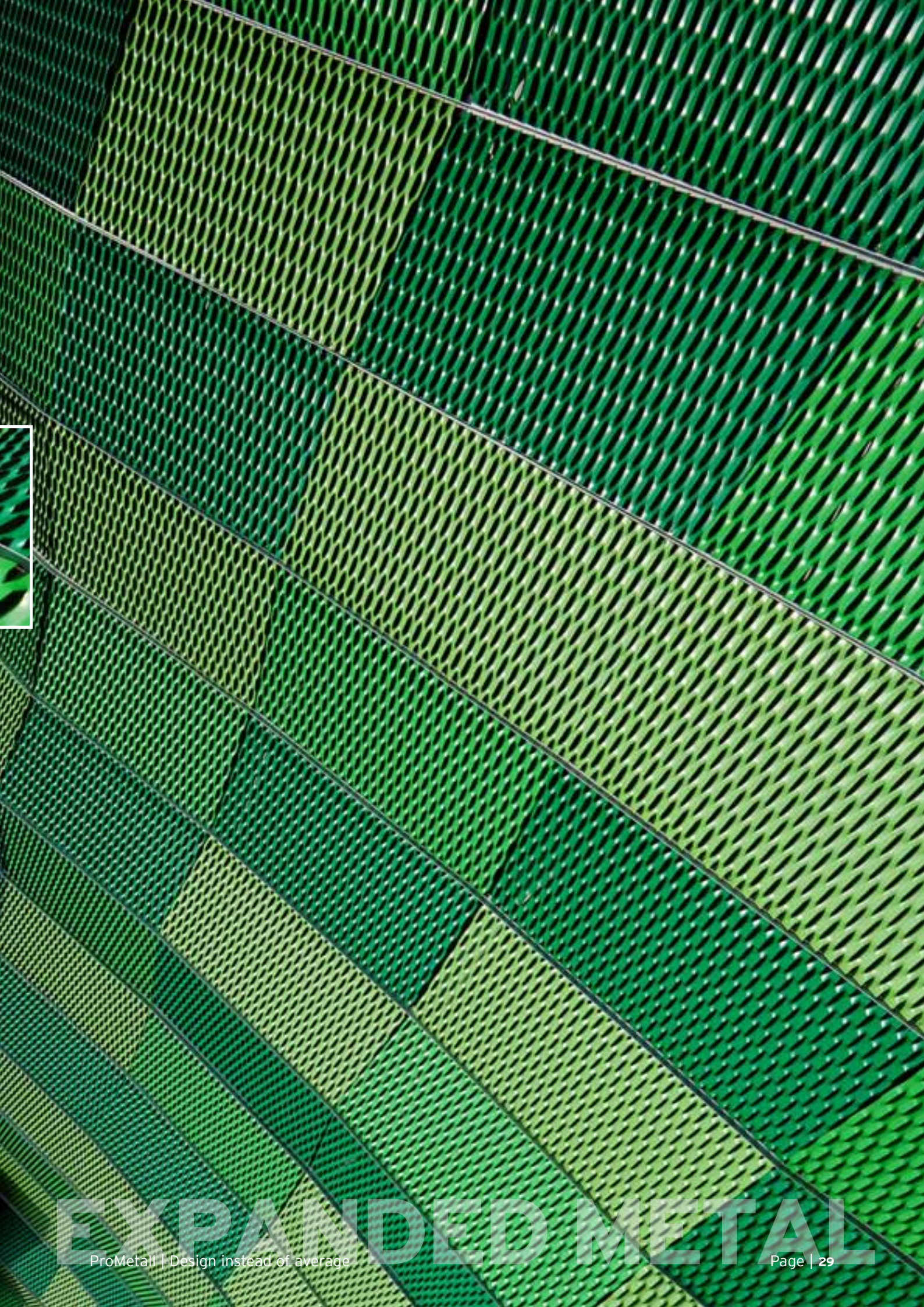
EXPANDED METAL Reference 13

Project: Spar Pottendorf

Material: Expanded metal type "Enns" / aluminium 2mm

Metal manufacturer: Wippel, Eisenstadt

Architect: KWI Engineers, Vienna



EXPANDED METAL



EXPANDED METAL Reference 14

Project: GENERALI Arena, Vienna

Material: Expanded metal type "Celje" /
aluminium 3mm anodised

Metal manufacturer: Zeman, Vienna

Architect: Atelier Mauch, Vienna





EXPANDED METAL

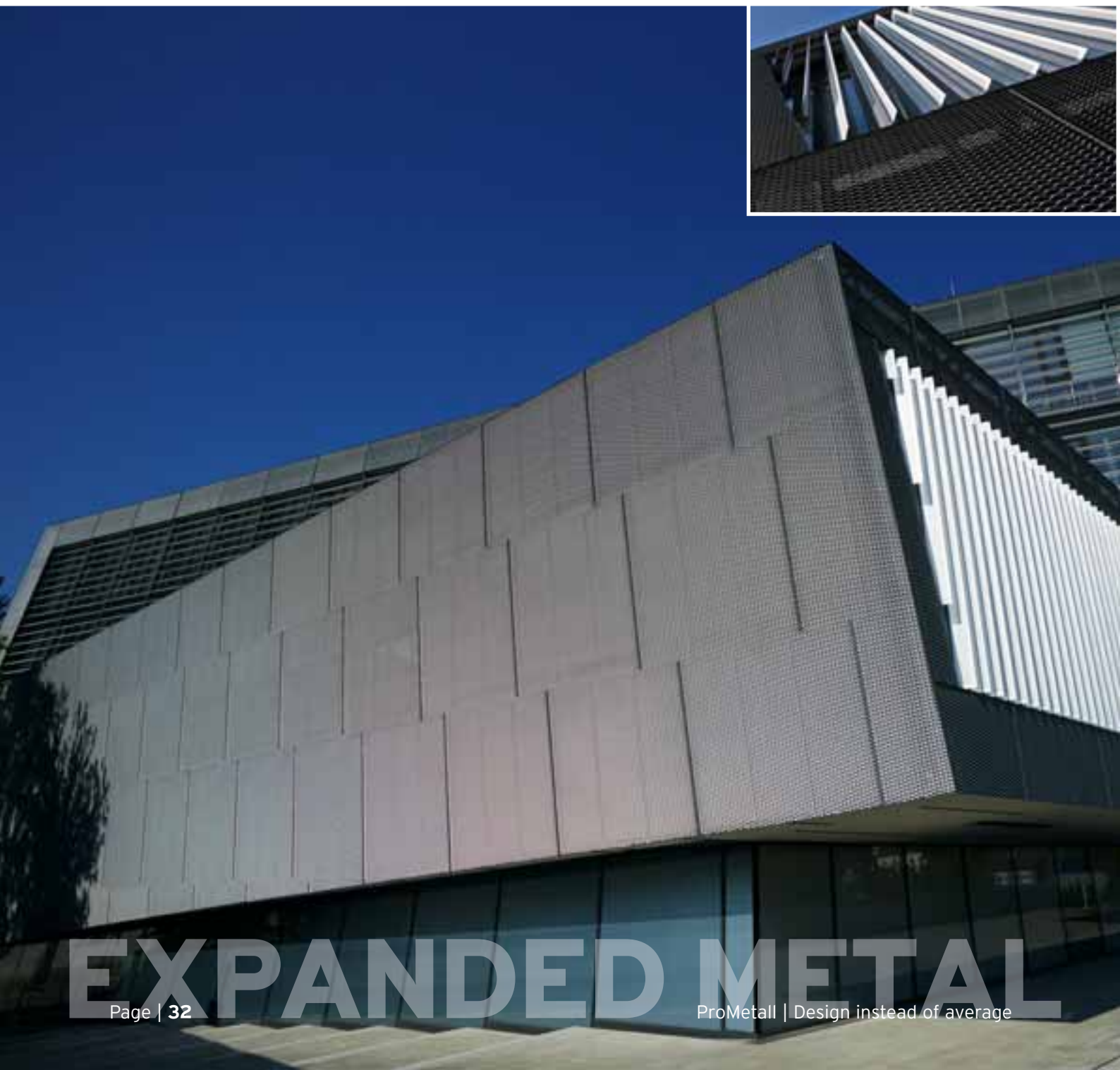
EXPANDED METAL: Reference 15

Project: Culture and Congress Centre Eisenstadt

Material: Expanded metal type "Graz" / aluminium 2mm, anodised

Metal manufacturer: MaTec, Neutal

Architect: Pichler Traupmann, Vienna





EXPANDED METAL



PATTERNED METAL SHEETS

PATTERNED METAL SHEETS Reference 16

Project: Sternbrauerei (brewery) Riedenburg, Salzburg

Material: Patterned metal sheets made of stainless steel, type "Linen"

Metal manufacturer: Faistauer, Maishofen





ARCHITECTURAL WIRE CLOTH

ARCHITECTURAL WIRE CLOTH Reference 17

Project: WU Campus Vienna, library

Material: Stainless steel wire cloth
"Detention 7016", painted

Metal manufacturer: Rudolf, Leobendorf

Architect: Zaha Hadid, Hamburg





ARCHITECTURAL WIRE CLOTH Reference 18

Project: Restaurant SHIKI, Vienna

Material: Stainless steel wire cloth "Largo-Plenus 2027" +
"Egla-Mono 4371", painted

Metal manufacturer: KAPO, Poellau

Architect: BEHF, Vienna



ProMetall

ProMetall GmbH

Ared Strasse 36 (ARED Park) • A-2544 Leobersdorf
Tel.: +43 2256 62541-0 • Fax: Ext 22
verkauf@prometall.at • www.prometall.at

Pro-Metall d.o.o.

Kušlanova 3 • HR-10000 Zagreb
tel: ++385 (0) 1 373 4248
faks: ++385 (0) 1 373 4685
office@prometall.hr
www.prometall.hr

