

BEST OF

ProMetall

REFERENCES

Design instead of average

www.prometall.at

ProMetall

Design instead of average

At ProMetall our day-to-day life is determined by creativity. Yet, nowadays, creativity alone is not enough anymore. We realised long ago that individuality is key to our success and your success. This applies to the smallest filter or sound insulation element in the automotive sector, protective gratings for machines and complete façade designs. We score through creativity and individuality and work for you on a domestic and international basis. Our extensive product range, including a wide range of standard products, is a contributing factor. All these components ensure our success on the international competitors' market.

We are committed to the creative and specific implementation of customers' wishes; this is ensured by our five product categories perforated metal sheets, expanded metal, wire mesh, profile edgings and gratings. Our vast experience and years of professional know-how allow us to realise our partners' excellent ideas, especially those of architects. This ensures that our customers' visual and technical wishes are perfectly realised with attention to detail, our partners' attractive plans are precisely installed, and the parts are manufactured individually, visually attractive and with technical precision.

Products that are tailor-made for each client in accordance with smart designs: this ensures the success of our customers in the extensive metal-processing sector.

ProMetall stands for: Design instead of average



**There are countless variations
of colours and perforations.**

Every project gets its tailor-made look.

DI Bertold Henzler, Berlin



Contents

Best of ProMetall References

PERFORATED METAL SHEET

Reference 01	Project District Court West, Graz	Page 04–05
Reference 02	Project Provincial Fire Brigade School Tulln	Page 06–07
Reference 03	Project Residential Complex Brewery Liesing, Vienna	Page 08–09
Reference 04	Project Health Resort Bad Bleiberg	Page 10–11
Reference 05	Project Mercator Centar	Page 12–13
Reference 06	Project Cityhotel, City Center Maribor	Page 14–15
Reference 07	Project WU Wien	Page 16–17

EXPANDED METAL

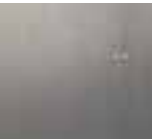
Reference 08	Project Zagreb Dance Centre	Page 18–19
Reference 09	Project ASFINAG ABM, Graz-Raaba	Page 20–21
Reference 10	Project OeBB Train Station Vienna North, Vienna	Page 22–23
Reference 11	Project BTV Innsbruck	Page 24–25
Reference 12	Project Music school "Kloesterle", Landeck	Page 26–27
Reference 13	Project Kaiser Franz Josef Hospital / SMZ-South, Vienna	Page 28–29
Reference 14	Project Voest Alpine AG, Linz	Page 30–31
Reference 15	Project State Hospital Feldbach	Page 32–33
Reference 16	Project Car Park State Hospital, Mostviertel/Waidhofen	Page 34–35
Reference 17	Project Culture and Congress Centre Eisenstadt	Page 36–37
Reference 18	Project Residential Complex Donaufelderstrasse, Vienna	Page 38–39

PATTERNED METAL SHEETS

Reference 19	Project Bergisel	Page 40–41
--------------	------------------	------------

ARCHITECTURAL WIRE CLOTH

Reference 20	Project Car Park Trade Fair Vienna	Page 42–43
--------------	------------------------------------	------------





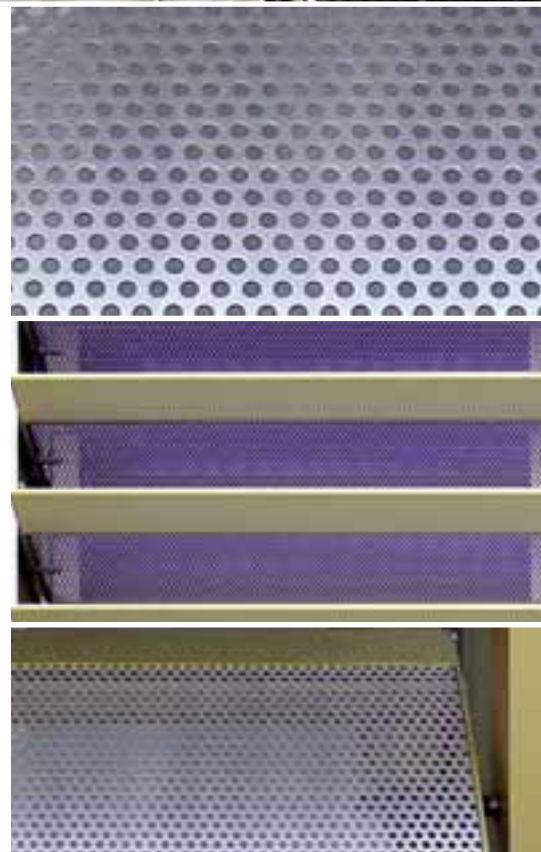
PERFORATED METAL SHEET Reference 01

Project: District Court West, Graz

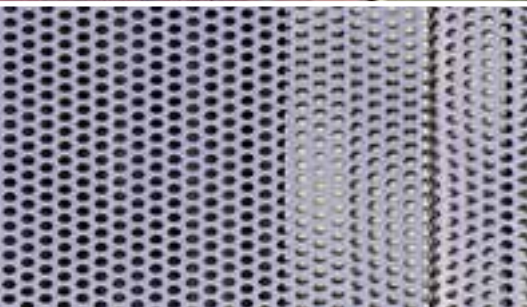
Material: Aluminium - colour-anodised
special perforation Rt 5 - 8 mm

Metal manufacturer: Colt Austria, Linz

Architect: Zeytinoglu, Vienna







PERFORATED METAL SHEET Reference 02

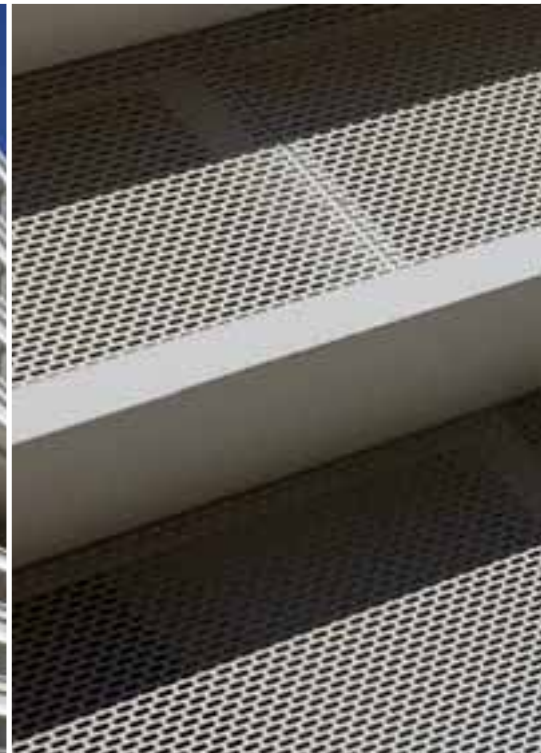
Project: Provincial Fire Brigade
School Tulln

Material: Stainless steel polished
special perforation Rt 20 - 30 mm
incl. special edges

Metal manufacturer: Stoppacher, Weiz

Architect: Maurer, Hollabrunn





PERFORATED METAL SHEET



PERFORATED METAL SHEET Reference 03

Project: Residential Complex
Brewery Liesing, Vienna

Material: Aluminium, powder-coated, thickness 2 mm
perforation LR-Z 5 x 20 / 8.5 x 25 mm
slots // 2500 mm

Metal manufacturer: RLH Wiener Becken reg. GenmbH
Stahl- & Metallbau Hrabal, Tattendorf

Architect: DELUGAN MEISSL ASSOCIATED
ARCHITECTS, Vienna





PERFORATED METAL SHEET Reference 04

Project: Health Resort Bad Bleiberg
GmbH & CoKG

Material: Steel - SVZ-powder-coated
thickness 1.5 mm
perforation: Ru 20 - 48.5 mm

Metal manufacturer: Metallbau Wilhelmer GmbH, Kolbnitz

Architect: Adamer-Ramsauer, Kufstein



PERFORATED METAL SHEET

ProMetall | Design instead of average

Page | 11

PERFORATED METAL SHEET Reference 05

Project: Mercator Centar

Material: Aluminium, Rt 20 - 28 mm
mesh: Varaždin

Metal manufacturer: Tehnika, Zagreb

Architect: Projektni ured "Tehnika", Petra Curač Smolčić





PERFORATED METAL SHEET

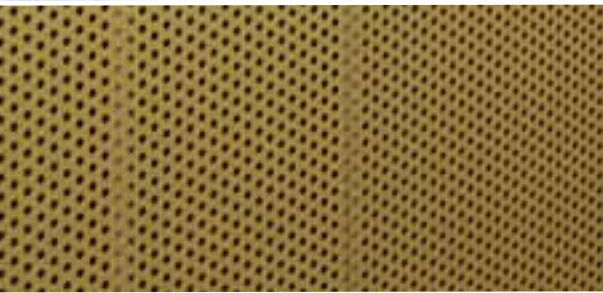


PERFORATED METAL SHEET Reference 06

Project: Cityhotel, City Center Maribor

Material: Aluminium powder-coated
thickness 2 mm
perforation Rt 20 - 40 mm

Metal manufacturer: Reflex Gornja Radgona, Slovenia



PERFORATED METAL SHEET Reference 07

Project: WU Wien W1D

Material: Aluminium anodised
perforation Rt 3 - 5 mm /
Rt 12 - 15 mm, edged

Metal manufacturer: GIG Fassaden, Attnang-Puchheim

Architect: Maurer & Partner, Hollabrunn





PERFORATED METAL SHELT

ProMetall | Design instead of average

Page | 17



EXPANDED METAL

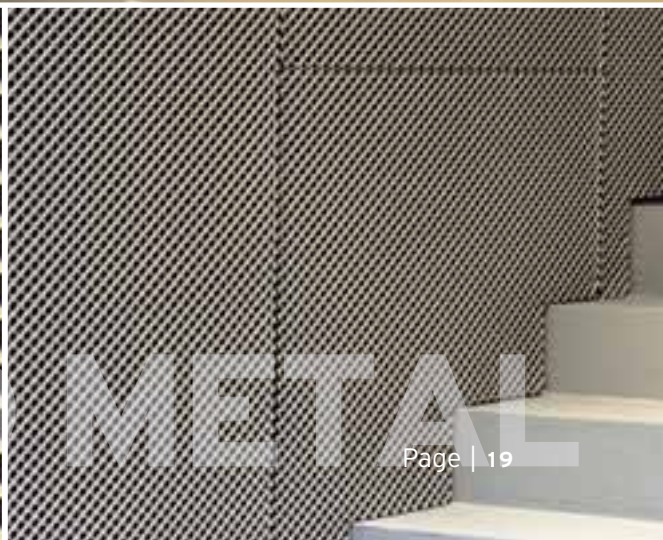
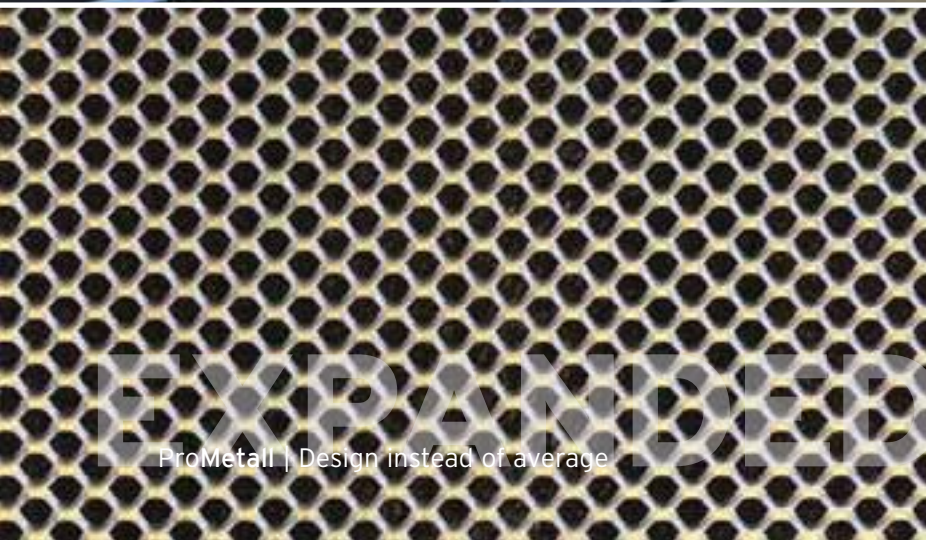
EXPANDED METAL Reference 08

Project: Zagreb Dance Centre

Material: Aluminium
mesh "Varaždin"

Metal manufacturer: Strojometal-Jordan, Samobor

Architect: Studio 3LHD d.o.o.



EXPANDED METAL &
PERFORATED METAL SHEET: Reference 09

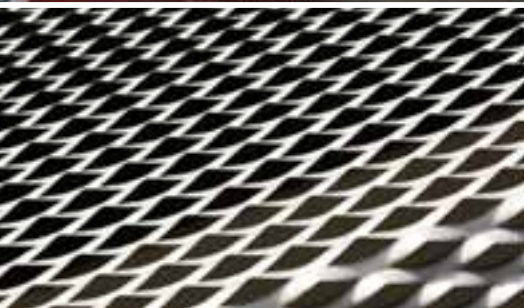
Project: ASFINAG, ABM Graz-Raaba

Material: Expanded metal: aluminium anodised, thickness 1.5 mm, mesh "Amstetten"
Perforated metal sheet: Aluminium AlMg3hh, thickness 2 mm
perforation Lr-u 10 x 40 / 20 x 50 mm

Metal manufacturer: Expanded metal: LOKO Logistikkomponenten GmbH, Tieschen
Perforated metal sheet: G. Voelkl GesmbH, Leoben

Architect: Architekturbuero W+G Wratschko, Graz





EXPANDED METAL



EXPANDED METAL Reference 10

Project: OeBB Train Station
Vienna North

Material: Aluminium, thickness 2mm
special coating worked into glass
special mesh R 200 x 75 x 12 x 2 mm

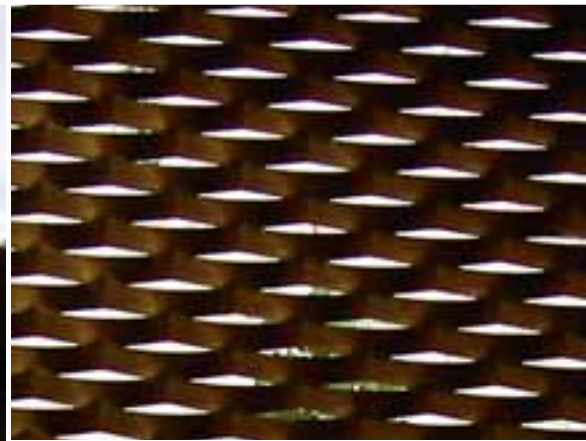
Metal manufacturer: Eckelt Glas GmbH, Steyr

Architect: Arch. DI Albert Wimmer, STUDIO 13, Vienna





EXPANDED METAL



EXPANDED METAL



EXPANDED METAL Reference 11

Project: BTV Innsbruck

Material: Bronze metal
mesh "Amstetten"

Metal manufacturer: Anker, Hall

Architect: Vogl-Fernheim, Innsbruck



EXPANDED METAL Reference 12

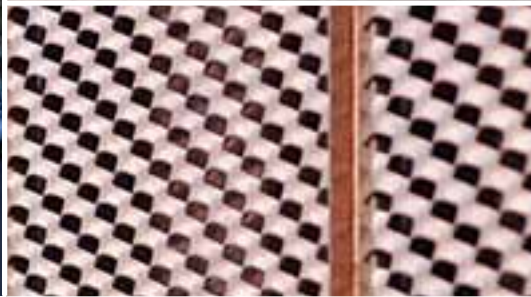
Project: Music school "Kloesterle", Landeck

Material: Copper raw
mesh "Gumpoldskirchen"

Metal manufacturer: SFL, Stallhofen

Architect: Ostertag Architekten, Vienna





EXPANDED METAL





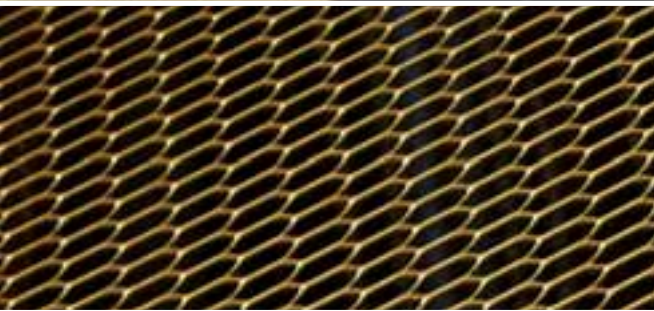
EXPANDED METAL Reference 13

Project: Kaiser Franz Josef Hospital / SMZ-South, Vienna

Material: Aluminium raw, thickness 2 mm
mesh "Graz"

Metal manufacturer: fuchs glas-technik.at GmbH, St. Valentin

Architect: Architektenteam ARTEC, Vienna



EXPANDED METAL Reference 14

Project: VOEST ALPINE AG, Linz

Material: Steel hot-dip-galvanised and powder-coated mesh "Feldkirch" - special edition

Metal manufacturer: Alu Sommer GmbH, Stoob

Architect: Feichtinger architects, Paris/Vienna



EXPANDED METAL

ProMetall | Design instead of average

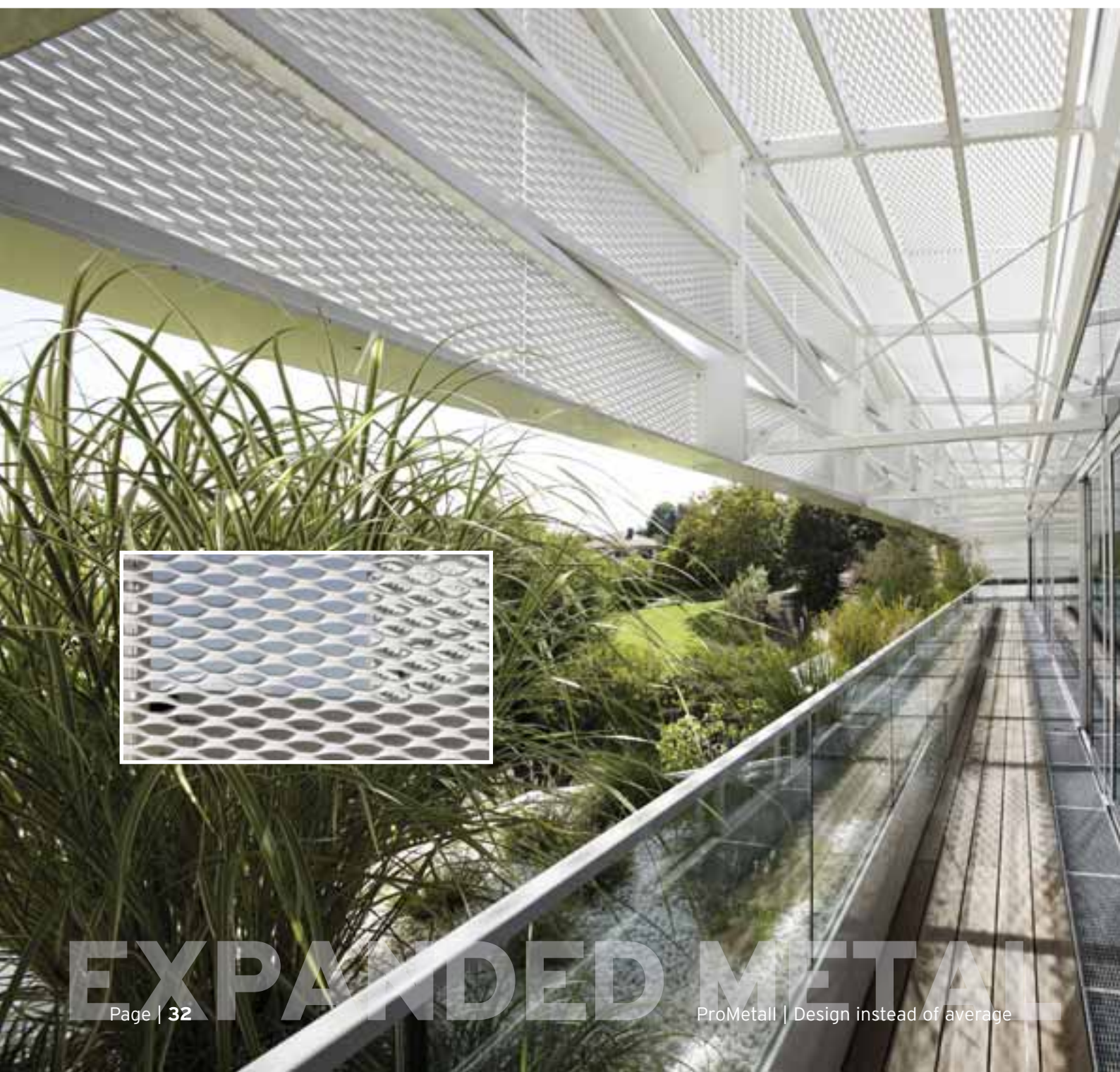
Page | 31

EXPANDED METAL: Reference 15

Project: State Hospital Feldbach

Material: Steel, thickness 2 mm
mesh "Leobersdorf" hot-dip-galvanised +
powder-coated

Metal manufacturer: Metallbau Hubert Trummer, Bad Gleichenberg





EXPANDED METAL

ProMetall | Design instead of average

Page | 33



EXPANDED METAL Reference 16

Project: Car Park State Hospital,
Mostviertel/Waidhofen

Material: Aluminium, thickness 2 mm
mesh "Leobersdorf"

Metal manufacturer: KSM Karkheck GmbH, Neufurth/Amstetten



EXPANDED METAL



EXPANDED METAL

EXPANDED METAL Reference 17

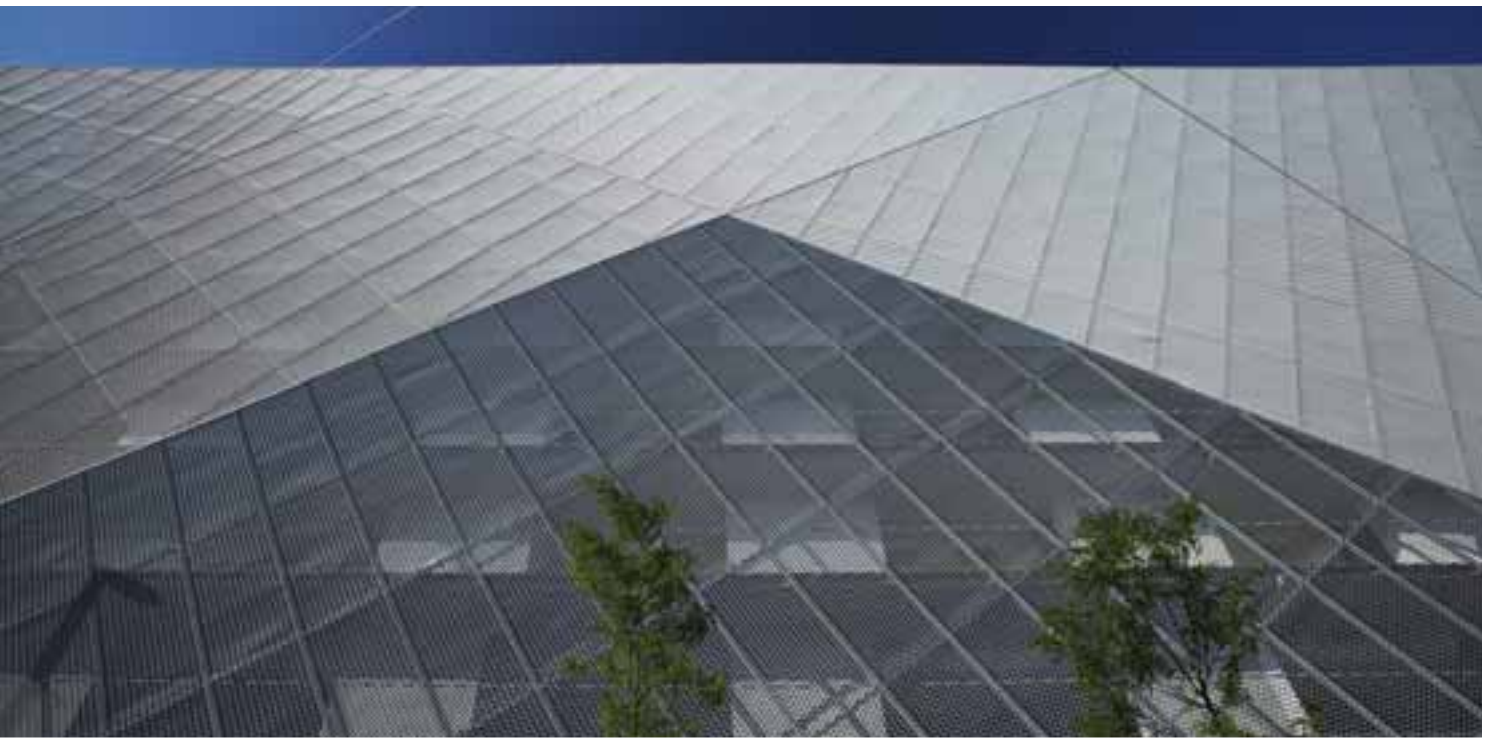
**Project: Culture and Congress Centre
Eisenstadt**

Material: Mesh "GRAZ" anodised

Metal manufacturer: MA-Tec, Neutal

Architect: Arch. Pichler & Traupmann, Vienna





EXPANDED METAL Reference 18

Project: Residential Complex
Donaufelderstrasse, Vienna

Material: Aluminium, thickness 3 mm
mesh "CELJE"

Metal manufacturer: Metallbau Erwin Wippel, Eisenstadt

Architect: Arch. Else Prochazka/
Baumschlager Eberle Wien ZT GmbH





EXPANDED METAL

PATTERNED METAL SHEETS Reference 19

Project: Bergisel

Material: Stainless steel, patterned
type "Cambridge"

Architect: Zaha Hadid





PATTERNED METAL SHEETS

ProMetall | Design instead of average

Page | 41



ARCHITECTURAL WIRE CLOTH Reference 20

Project: Car Park Trade Fair Vienna

Material: Architectural wire cloth "Multi Barette"

Architect: Projektteam Messeplanung, Vienna



ARCHITECTURAL WIRE CLOTH

ProMetall | Design instead of average

Page | 43



ProMetall GmbH

Ared Strasse 36 (ARED Park) • A-2544 Leobersdorf
Tel.: +43 2256 62541-0 • Fax: Ext 22
verkauf@prometall.at • www.prometall.at

Pro-Metall d.o.o.

Kušlanova 3 • HR-10000 Zagreb
Tel: ++385 (0) 1 373 4248 • Fax: ++385 (0) 1 373 4685
office@prometall.hr • www.prometall.hr