

# ProMetall

Design instead of average

References 2008/2009

[www.prometall.at](http://www.prometall.at)



# ProMetall

## Design instead of average

At ProMetall our day-to-day life is determined by creativity. Yet, nowadays, creativity alone is not enough anymore. We realised long ago that individuality is key to our success and your success. This applies to the smallest filter or sound insulation element in the automotive sector, protective gratings for machines and complete façade designs. We score through creativity and individuality and work for you on a domestic and international basis. Our extensive product range, including a wide range of standard products, is a contributing factor. All these components ensure our success on the international competitors' market.

We are committed to the creative and specific implementation of customers' wishes; this is ensured by our five product categories perforated metal sheets, expanded metal, wire mesh, profile edgings and gratings. Our vast experience and years of professional know-how allow us to realise our partners' excellent ideas, especially those of architects. This ensures that our customers' visual and technical wishes are perfectly realised with attention to detail, our partners' attractive plans are precisely installed, and the parts are manufactured individually, visually attractive and with technical precision.

Products that are tailor-made for each client in accordance with smart designs: this ensures the success of our customers in the extensive metal-processing sector.

ProMetall stands for: Design instead of average



**There are countless variations of colours and perforations.**

**Every project gets its individual tailor-made look.**

DI Bertold Henzler, Berlin



# Contents

## ProMetall References 2008/09

### PERFORATED METAL SHEET

Reference 01	Project House of the EU, Vienna	Page 04-04
Reference 02	Project Residential Complex Zur Spinnerin, Vienna	Page 05-05
Reference 03	Project Passive Residential Complex Pantucekgasse, Vienna	Page 06-06
Reference 04	Project Residential Complex Martinstrasse, Vienna	Page 07-07
Reference 05	Project Residential Complex Attemsgasse, Vienna	Page 08-08
Reference 06	Project Terraced Houses Breitenauer Estate, Wr. Neustadt	Page 09-09
Reference 07	Project Residential Complex Brewery Liesing, Vienna	Page 10-11
Reference 08	Project Health Resort Bad Traunstein	Page 12-13
Reference 09	Project SEELE Austria, Schoerfling am Attersee	Page 14-14
Reference 10	Project Residential Complex Mitte Lehen East, Salzburg Lehen	Page 15-15
Reference 11	Project Residential Complex Tivoli BT1+2, Innsbruck	Page 16-16
Reference 12	Project Residential Complex Hofnerstrasse, Goefis	Page 17-17
Reference 13	Project Hotel Post, Brugg	Page 18-18
Reference 14	Project UPC-Arena, Graz	Page 19-19
Reference 15	Project Health Resort Bad Bleiberg	Page 20-21

### GRATINGS

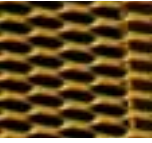
Reference 16	Project Golden Jet Planai Trains, Schladming	Page 22-23
Reference 17	Project Olympia Bob Run Igls	Page 24-25

### WIRE MESH

Reference 18	Project AQI Hotel Schladming	Page 26-27
--------------	------------------------------	------------

### EXPANDED METAL

Reference 19	Project Private Villa Toni Polster, Vienna	Page 28-29
Reference 20	Project ASFINAG ABM, Graz-Raaba	Page 30-31
Reference 21	Project OeBB Train Station Vienna North, Vienna	Page 32-33
Reference 22	Project K. Franz Josef Hospital/SMZ-South, Vienna	Page 34-35
Reference 23	Project Park & Ride; Vienna-Huetteldorf	Page 36-37
Reference 24	Project Bridge across Heiligenstaetterstrasse, Vienna	Page 38-38
Reference 25	Project Residential Complex Auboeck, Vienna	Page 39-39
Reference 26	Project Terra Schwechat	Page 40-40
Reference 27	Project Interio Moebelhaus, Voesendorf	Page 41-41
Reference 28	Project Voest Alpine AG, Linz	Page 42-43
Reference 29	Project Residential Complex Hoerbrannerstrasse, Lochau	Page 44-44
Reference 30	Project Residential Complex Fosslgasse, Graz	Page 45-45
Reference 31	Project SC Murpark, Graz-Liebenau	Page 46-47
Reference 32	Project ASFINAG Bruck/Mur-Frohnleiten	Page 48-49
Reference 33	Project Falkensteiner Hotel ASIA SPA Leoben	Page 50-51
Reference 34	Project Car Park Planai, Schladming	Page 52-53
Reference 35	Project Residential Complex Am Birkengrund, Klagenfurt	Page 54-54
Reference 36	Project RBB Raiffeisenbank, St.Veit/Glan	Page 55-55







PERFORATED METAL SHEET Reference 01

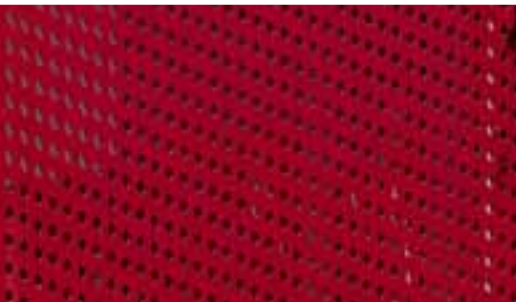
**Project:** House of the EU  
1010 Vienna  
Wipplingerstrasse 35

**Material:** ProMetall perforated  
metal sheets  
aluminium-anodised,  
thickness 3 mm  
special perforation  
Ru 4 - 8.66 mm

**Metal manufacturer:** Linzner Metallbau GesmbH  
4072 Alkoven, Metallbaustrasse 1  
[www.linzner.at](http://www.linzner.at)  
for SOLAR WINGS  
Lamellensysteme GmbH  
4020 Linz, Duernbergerstrasse 8  
[www.solarwings-oe.at](http://www.solarwings-oe.at)

**Architect:** Tillner & Willinger  
Steffel Architekt ZT GmbH  
1080 Vienna, Trautsohngasse 1  
[www.steffel.at](http://www.steffel.at)

**Description:** Sun protection slats



PERFORATED METAL SHEET Reference 02

**Project:** Residential Complex Zur Spinnerin  
1 100 Vienna  
Hartmuthgasse, Knoellgasse

**Material:** ProMetall perforated metal sheets  
steel galvanised and powder-coated  
thickness 2 mm  
perforation Ru 15 - 34.64 mm

**Metal manufacturer:** Metallbau Vorreiter GmbH  
9360 Friesach  
Lobissergasse 1  
[www.metallbau-vorreiter.at](http://www.metallbau-vorreiter.at)

**Description:** Railings





PERFORATED METAL SHEET Reference 03

**Project:** Passive House Residential Complex  
Pantucekgasse, 1 110 Vienna  
Pantucekgasse 14/Roschegasse

**Material:** ProMetall perforated metal sheets  
steel subsequently hot-dip-galvanised  
thickness 2mm  
special perforation Rt 20 - 32 mm

**Metal manufacturer:** ALS Haller, 7423 Grafenschachen  
Gewerbepark 1, [www.als-haller.at](http://www.als-haller.at)

**Architect:** Treberspurg & Partner ZT GesmbH  
1140 Vienna, Penzingerstrasse 58  
[www.treberspurg.com](http://www.treberspurg.com)

**Description:** Railings





PERFORATED METAL SHEET Reference 04

**Project:** Residential Complex Martinstrasse  
3400 Klosterneuburg  
Martinstrasse 22-26

**Material:** ProMetall perforated metal sheets and profiles  
steel galvanised and powder-coated,  
thickness 1.5 mm  
E 20 x 30 mm

**Metal manufacturer:** Metallbau Vorreiter GmbH  
9360 Friesach  
Lobissergasse 1  
[www.vorreiter.at](http://www.vorreiter.at)

**Architect:** Frank Matzinger

**Description:** Railings







PERFORATED METAL SHEET Reference 05

**Project:** Residential Complex  
Attemsgasse  
1220 Vienna  
Attemsgasse 5

**Material:** ProMetall perforated metal sheets  
aluminium powder-coated, thickness 2 mm,  
perforation Rt 5 - 8 mm/Rt 4 - 6 mm

**Metal manufacturer:** RBR Plaschitz GmbH  
2111 Rueckersdorf-Harmannsdorf  
Gewerbestr. 14  
[www.rbr-plaschitz.at](http://www.rbr-plaschitz.at)

**Architect:** ARGE Elsa Prochazka Architekturbuero and  
Baumschlager Eberle P.ARC ZT GmbH  
[www.prochazka.at](http://www.prochazka.at)

**Description:** Aluminium architecture prize 2008!  
balcony railings  
[www.oesw.at](http://www.oesw.at)





PERFORATED METAL SHEET Reference 06

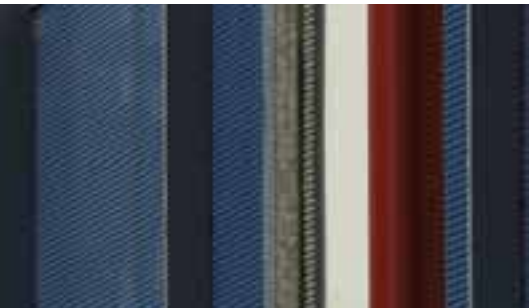
**Project:** Terraced Houses  
Breitenauer Estate  
2700 Wiener Neustadt  
Franz-Kober-Gasse

**Material:** ProMetall perforated metal sheets  
perforation Rt 5 - 8/thickness 1.5 mm  
steel galvanised and powder-coated

**Metal manufacturer:** Schlosserei Josef Pichler GmbH  
2860 Kirchsschlag, Seiserstrasse 10  
[www.kirchs Schlag.at/pichlerschlosser](http://www.kirchs Schlag.at/pichlerschlosser)

**Architect:** Presoly Architektur ZT GmbH  
2700 Wiener Neustadt  
Engelbrechtgasse 2  
[www.presoly.at](http://www.presoly.at)

**Description:** Balcony railings  
beautiful, blue powder-coating  
with frame construction in silver/chrome look





PERFORATED METAL SHEET Reference 07

**Project:** Residential Complex Brewery  
Liesing 1230 Vienna  
Breitenfurter Strasse 372-380

**Material:** ProMetall perforated metal sheets  
aluminium powder-coated, thickness 2 mm  
perforation LR-Z 5 x 20/8.5 x 25 mm slots //  
2500 mm

**Metal manufacturer:** RLH Wiener Becken reg. GenmbH  
Stahl- & Metallbau Hrabal  
2523 Tattendorf, [www.lagerhaus-wienerbecken.at](http://www.lagerhaus-wienerbecken.at)

**Architect:** COOP HIMMELB(L)AU  
Wolf D. Prix /W. Dreibholz & Partner ZT GmbH  
1050 Vienna, Spengergasse 37,  
[www.coop-himmelblau.at](http://www.coop-himmelblau.at)

**Description:** Balcony railings





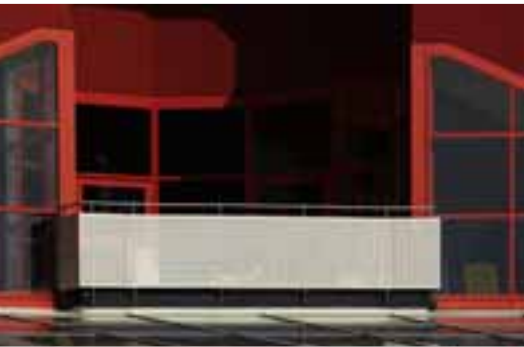


# PERFORATED METAL SHEET

ProMetall | Design instead of average

Page | 11





# PERFORATED METAL SHEET





PERFORATED METAL SHEET Reference 08

**Project:** Health Resort Bad Traunstein  
3632 Traunstein  
Windmuehlenweg 140

**Material:** ProMetall perforated metal sheets  
steel SVZ and powder-coated  
perforation Ru 20 - 48.5 mm

**Metal manufacturer:** Metallbau Wilhelmer GmbH  
9815 Kolbnitz  
Oberkolbnitz 13  
[www.metallbau-wilhelmer.at](http://www.metallbau-wilhelmer.at)

**Architect:** Architekt DI Gerd Keller  
1060 Vienna  
Mollardgasse 70b

**Description:** Balcony railings





PERFORATED METAL SHEET Reference 09

**Project:** Office Expansion  
Connecting Bridge  
SEELE Austria GmbH & Co KG  
4861 Schoerfling am Attersee,  
Gewerbepark 2

**Material:** ProMetall perforated metal sheets, aluminium powder-coated, thickness 4 mm, special perforation, Ru diameter 20 - 70 mm

**Metal manufacturer:** Metallbau Federer Ges.m.b.H. & Co KG  
4431 Ramingdorf, Ramingdorf 33, [www.federer.at](http://www.federer.at)

**Architect:** Kauffmann Theilig & Partner, Freie Architekten BDA, Stuttgart; Hofmeister Baumeister Generalplaner, 4490 St. Florian, [www.hoba.at](http://www.hoba.at)

**Description:** Façade



PERFORATED METAL SHEET Reference 10

**Project:** Residential Complex  
Mitte Lehen East  
5020 Salzburg-Lehen,  
Tulpenstrasse

**Material:** ProMetall perforated metal sheets  
aluminium anodised, thickness 2 mm  
perforation Rt 5 - 8 mm  
40 mm edging and mounting  
holes on all sides

**Metal manufacturer:** Faistauer GmbH & CoKG  
5751 Maishofen, Saalfeldnerstr. 35  
[www.schlosserei-faistauer.at](http://www.schlosserei-faistauer.at)

**Architect:** HALLE 1 Architekturbuero  
DI Gerhard Sailer &  
DI Heinz Lang  
5020 Salzburg  
Innsbrucker Bundesstrasse 71  
[www.halle1.at](http://www.halle1.at)

**Description:** Balcony railings



PERFORATED METAL SHEET Reference 11

**Project:** Residential Complex Tivoli BT1+2  
**Developer:** Neue Heimat Tirol  
**6020 Innsbruck, Olympiastrasse**

**Material:** ProMetall perforated metal sheets  
steel, subsequently hot-dip-galvanised  
thickness 2 mm  
perforation Ru 20 - 48.5 mm  
special formats with unperforated borders

**Metal manufacturer:** Hoerbinger GesmbH, Stahl-und Metallbau  
6426 Roppen 169, [www.hoerbinger.com](http://www.hoerbinger.com)

**Architect:** Architekturbuero Schwamberger (BT1)  
6020 Innsbruck, Pfarrgasse 3  
[www.schwamberger.at](http://www.schwamberger.at);  
Architekturbuero DI Gerhard Manzl (BT2)  
6020 Innsbruck, Pechestrasse 1  
[www.manzlritschsandner.com](http://www.manzlritschsandner.com)

**Description:** Railings







PERFORATED METAL SHEET Reference 12

**Project:** Residential Complex Hofnerstrasse, 6811 Goefis  
**Developer:** ZIMA Wohn Baugesellschaft mbH  
6850 Dornbirn  
Lustenauerstr. 64

**Material:** ProMetall perforated metal sheets  
aluminium, thickness 3 mm, perforation Ru 3 - 16 mm

**Metal manufacturer:** Schlosserei Wolfgang Bartl  
6714 Nueziders, Illweg 12, [www.bartlw.com](http://www.bartlw.com)

**Architect:** Purtscher/Xander APX Bauplanungs GmbH  
6800 Feldkirch, Kreuzgasse 10, [www.apx.at](http://www.apx.at)

**Description:** External and internal railings,  
waste separation wall





PERFORATED METAL SHEET Reference 13

**Project: Hotel Post  
6870 Bezau, Brugg 35**

**Material:** ProMetall perforated metal sheet  
stainless steel 1.4301, thickness 1 mm  
perforation Rt 6 - 8 mm  
(51% light permeability)

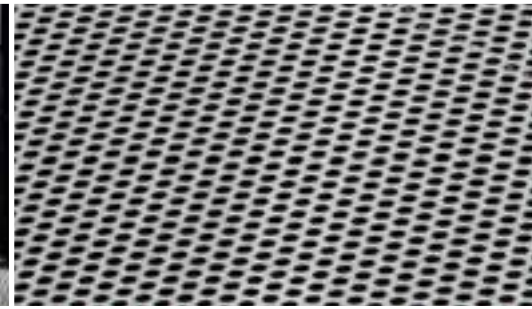
**Metal manufacturer:** Peter Figer  
Kunstschmiede-Bauschlosserei  
6870 Bezau, Wilbinger 660  
[www.figermetall.at](http://www.figermetall.at)

**Architect:** Architekturbuero Johannes Kaufmann GmbH  
6850 Dornbirn, Saegerstrasse 4  
[www.jkarch.at](http://www.jkarch.at)

**Description:** Balcony railings







PERFORATED METAL SHEET Reference 14

**Project:** UPC-Arena, Stadium Graz Liebenau  
Pedestrian Bridge Host Team  
Sector 27  
8010 Graz, Stadionplatz 1

**Material:** ProMetall perforated metall sheet  
steel-SVZ powder-coated,  
thickness 2mm perforation Rt 10 - 15 mm

**Metal manufacturer:** Bauunternehmen GRANIT GesmbH  
Department metal construction  
8022 Graz, Feldgasse 14  
[www.granit-bau.at](http://www.granit-bau.at)

**Architect:** Team A Architekten, Graz  
[www.team-a-graz.at](http://www.team-a-graz.at)

**Description:** Bridge railings



PERFORATED METAL SHEET Reference 15

**Project:** Health Resort  
Bad Bleiberg GmbH & CoKG  
9530 Bad Bleiberg  
Noetsch 78  
[www.kurzentrums.at](http://www.kurzentrums.at)

**Material:** ProMetall perforated metal sheets  
steel SVZ powder-coated  
thickness 1.5 mm  
perforation Ru 20 - 48.5 mm

**Metal manufacturer:** Metallbau Wilhelmer GmbH  
9815 Kolbnitz, Oberkolbnitz 13  
[www.metallbau-wilhelmer.at](http://www.metallbau-wilhelmer.at)

**Architect:** Adamer-Ramsauer, 6332 Kufstein  
[www.aar.at](http://www.aar.at)

**Description:** Balcony railings



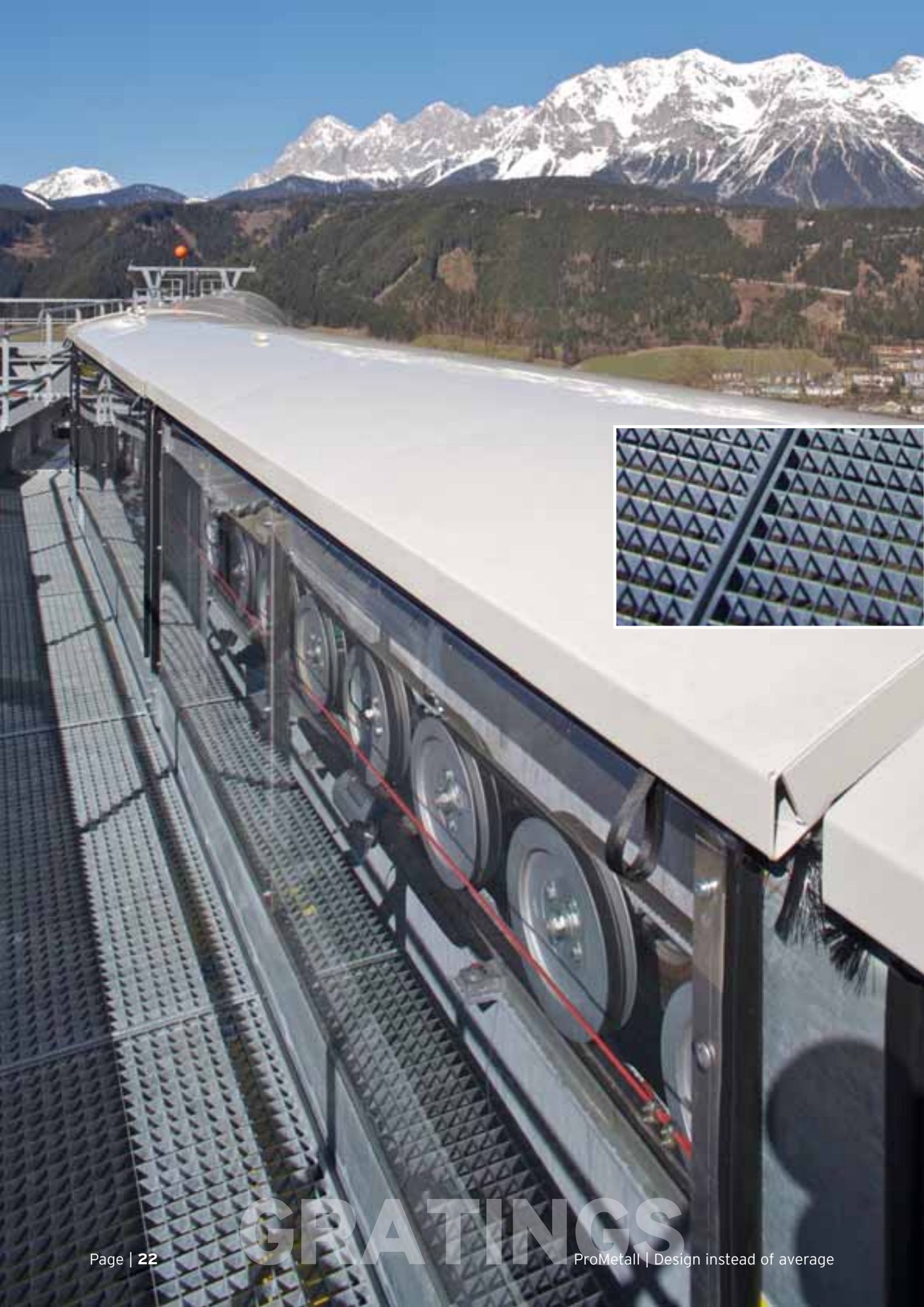


# PERFORATED METAL SHEET

ProMetall | Design instead of average

Page | 21





# GRATINGS





GRATINGS Reference 16

**Project:** Golden Jet Planai Trains  
Stairtreads and Platforms  
at the Middle and Mountain Station  
8970 Schladming

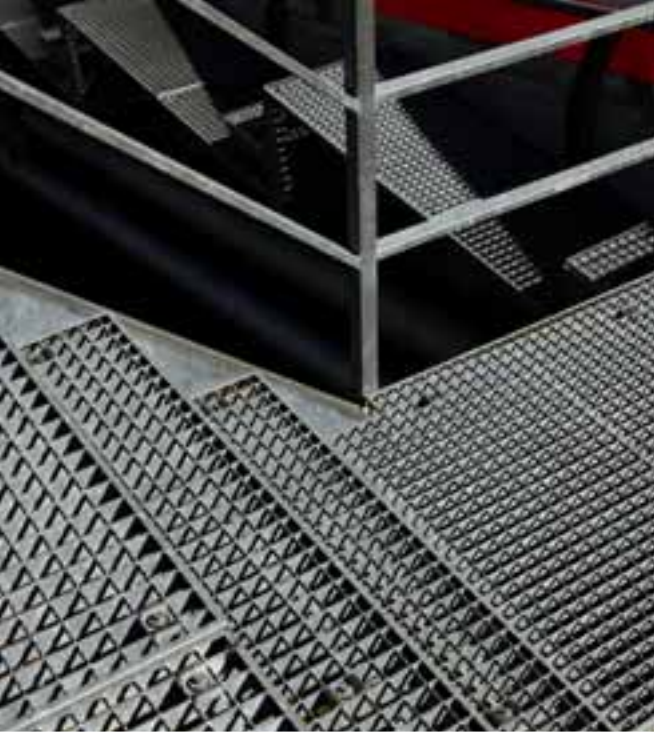
**Material:** ProMetall gratings custom-made gratings  
made of steel K60/St52 hot-dip-galvanised  
mesh 31 x 31 mm  
special edition static

**Metal manufacturer:** Schlosserei Metallbau Krammer Ges.m.b.H.  
8786 Rottenmann, Strechau 123  
[www.metallbau-krammer.at](http://www.metallbau-krammer.at)

**Architect:** Melzer & Hopfner, Bregenz  
(project planning middle and mountain station)

**Description:** Gratings for middle and mountain station

# GRATINGS



GRATINGS Reference 17

**Project:** Olympia Bob Run Igls  
**Developer:** Olympiaworld  
**Innsbruck**  
**6080 Igls**  
**Heiligwasserwiese 1**

**Material:** ProMetall gratings  
steel K60/St 52, hot-dip-galvanised  
custom-made gratings /  
custom-made stairtreads  
MW 31 x 31 mm

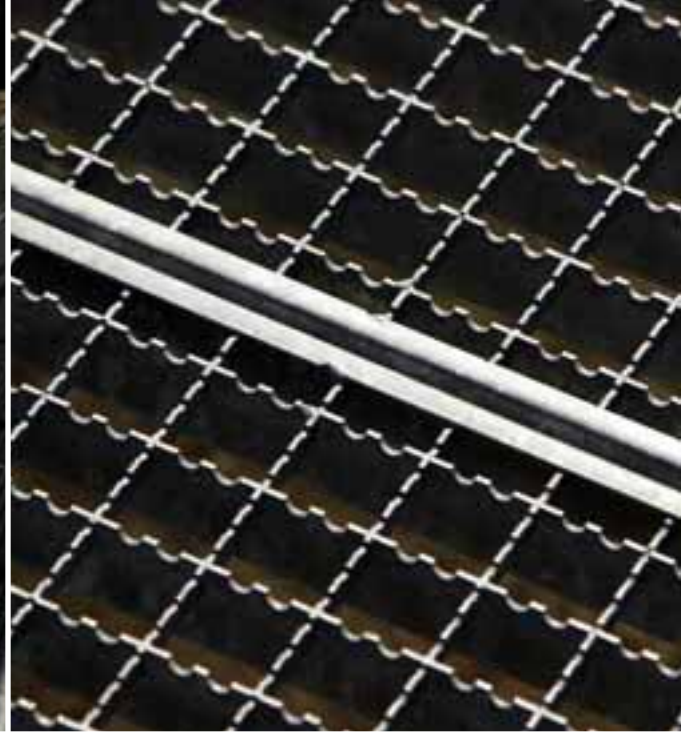
**Metal manufacturer:** Hoerbuerger GesmbH, Stahl-u.Metallbau  
6426 Roppen 169  
[www.hoerbuerger.com](http://www.hoerbuerger.com)

**Architect:** Architekt DI Hunger,  
6020 Innsbruck, Mentelgasse 12a  
& Architekturbuero Bonecker,  
6020 Innsbruck, Collingasse 3

**Description:** Stairtreads and platforms (no stands)

# GRATINGS





# GRATINGS



WIRE MESH Reference 18

**Project:** aqi Hotel Schladming  
8970 Schladming, Coburgstrasse 54  
TUI Hotels & Resorts & List TourConsult

**Material:** ProMetall mats  
spot-welded wire mesh made of galvanised wires  
mesh 100 x 25 x 3 mm

**Metal manufacturer:** Schlosserei Metallbau Krammer Ges.m.b.H.  
8786 Rottenmann, Strechau 123  
[www.metallbau-krammer.at](http://www.metallbau-krammer.at)

**Architect:** List TourConsult GmbH  
2822 Bad Erlach, List-Strasse 1, [www.list-tourconsult.com](http://www.list-tourconsult.com)

**Description:** Cladding underground car park / part building façade







# WIRE MESH



# EXPANDED METAL



**Project:** Private Villa Toni Polster  
1130 Vienna

**Material:** ProMetall expanded metal  
steel and special surface  
(deliberate corrosion, subsequently painted)  
thickness 2 mm, mesh "Ansfelden"

**Metal manufacturer:** Schlosserei Johann Kinastberger  
3051 St. Christophen, Nest 11, [www.kinastberger-design.at](http://www.kinastberger-design.at)

**Architect:** Architekturbuero GOSA  
DI Erich Goyer & DI Andreas Salamon  
1130 Vienna, Muenichreiterstr. 27, [www.gosa.at](http://www.gosa.at)

**Description:** Window panes, door panels, fence cladding, etc.



EXPANDED METAL &  
PERFORATED METAL SHEET: Reference 20

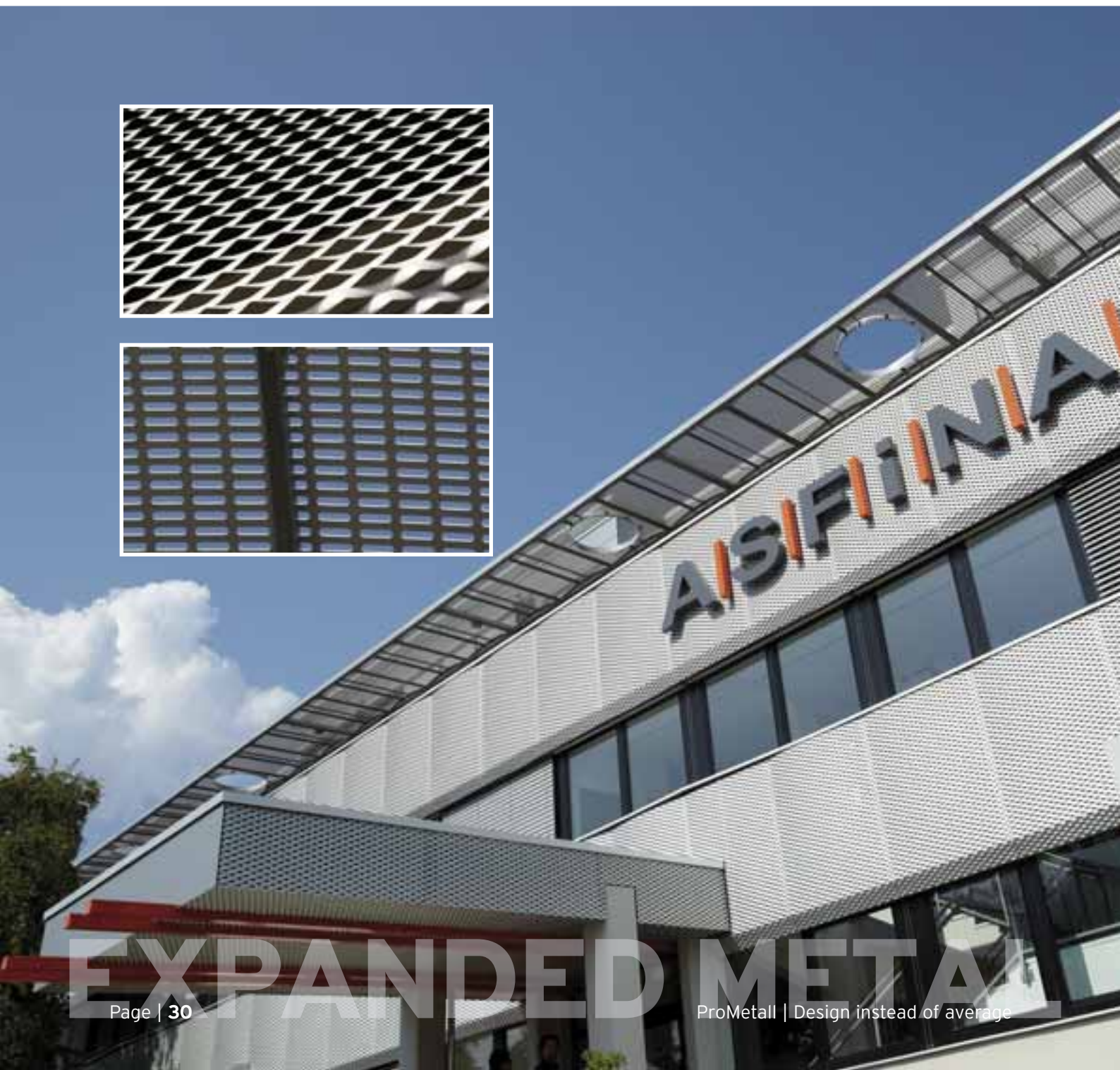
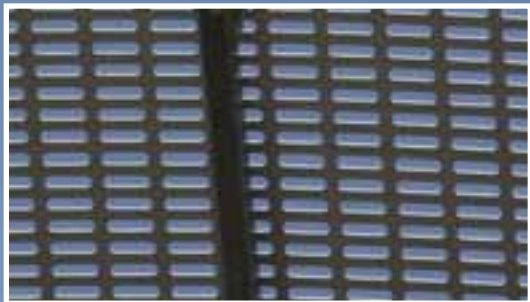
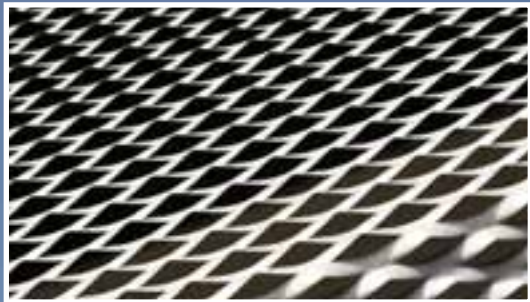
**Project:** ASFINAG, ABM Graz-Raaba,  
Refurbishment/Addition Office Building,  
8074 Graz-Raaba, Fuchsenfeldweg 71

**Material:** ProMetall expanded metal, aluminium anodised, thickness 1.5 mm, mesh "Amstetten"  
ProMetall perforated metal sheets, aluminium AlMg3hh, thickness 2mm  
perforation: Lr-u 10 x 40/20 x 50 mm

**Metal manufacturer:** EXPANDED METAL by: LOKO Logistikkomponenten GmbH, 8355 Tieschen, [www.loko.at](http://www.loko.at)  
PERFORATED METAL SHEETS by: Metall und Technik Voelkl, G. Voelkl GesmbH  
8700 Leoben, Scheiterbodenstr. 16-20, [www.voelkl.co.at](http://www.voelkl.co.at)

**Architect:** Architekturbuero W+G Wratschko, 8020 Graz, Grieskai 54, [www.arch-wratschko.at](http://www.arch-wratschko.at)

**Description:** Façade







# EXPANDED METAL





EXPANDED METAL Reference 21

**Project:** OeBB Train Station  
Vienna North, Praterstern  
1020 Vienna

**Material:** ProMetall expanded metal  
aluminium, thickness 2 mm  
special coating worked into glass!  
special mesh R 200 x 75 x 12 x 2 mm

**Metal manufacturer:** Eckelt Glas GmbH  
4400 Steyr, Resthofstrasse 18  
[www.eckelt.at](http://www.eckelt.at)

**Architect:** Arch. DI Albert Wimmer, STUDIO 13  
1130 Vienna, Hietzinger Hauptstrasse 136a  
[www.awimmer.at](http://www.awimmer.at)

**Description:** Glass façade construction  
incl. expanded metal  
GU Stahlbau Haslinger, 9560 Feldkirchen





# EXPANDED METAL





EXPANDED METAL Reference 22

**Project:** Kaiser Franz Josef Hospital/  
SMZ-South  
New Entrance Pavillion  
1100 Vienna, Kundratstrasse 3

**Material:** ProMetall expanded metal  
aluminium raw, thickness 2 mm  
mesh "Graz"

**Metal manufacturer:** fuchs glas-technik.at GmH  
4300 St. Valentin, Gewerbepark 5  
www.glas-technik.at

**Architect:** Architektenteam ARTEC  
1050 Vienna, Am Hundsturm 5  
www.artec-architekten.at

**Description:** Façade





# EXPANDED METAL





# EXPANDED METAL



EXPANDED METAL &  
PERFORATED METAL SHEET

Reference 23

**Project:** Park & Ride Vienna-Huetteldorf  
1140 Vienna  
Deutschordenstrasse 3a

**Material:** ProMetall expanded metal  
steel hot-dip-galvanised, thickness 2mm  
mesh: "Celje"  
ProMetall perforated metal sheet  
aluminium raw, thickness 2 mm  
perforation Rt 10 - 15 mm

**Metal manufacturer:** RBR Plaschitz GmbH  
Gewerbestr. 14  
2111 Rueckersdorf-Harmannsdorf  
[www.rbr-plaschitz.at](http://www.rbr-plaschitz.at)

**Architect:** Architekturbuero Zechner &  
Zechner ZT-GesmbH  
1060 Wien, Stumpergasse 14/23  
[www.zechner.com](http://www.zechner.com)

**Description:** Façade  
Developer: BIP-P&R Huetteldorf GmbH  
1030 Vienna, Schwarzenbergplatz 5/7





EXPANDED METAL Reference 24

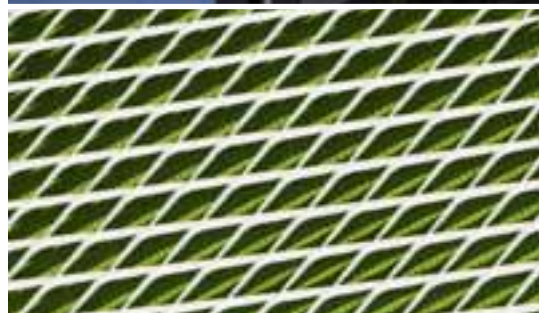
**Project:** Bridge across  
Heiligenstaedter Strasse  
in the area of the  
Private Clinic Doebling  
1 190 Vienna,  
Heiligenstaedter Str. 57-63

**Material:** ProMetall expanded metal  
aluminium powder-coated  
thickness 1.5 mm  
mesh "Celje"

**Metal manufacturer:** Fill Metallbau GesmbH  
4921 Hohenzell  
Gewerbestrasse West 22  
www.fill.at

**Architect:** DI Johannes Zeininger  
1070 Vienna, Stuckgasse 3  
www.zeininger.at

**Description:** Façade, road crossing







EXPANDED METAL Reference 25

**Project: Residential Complex Auboeck  
1 190 Vienna  
Hutweidengasse 60**

**Material:** ProMetall expanded metal  
aluminium raw, thickness 1.5 mm  
mesh "Amstetten"

**Metal manufacturer:** Brueder Riegler GesmbH & CO KG  
4470 Enns, Mainstrasse 2  
[www.brueder-riegler-gesmbH.gemeindeausstellung.at](http://www.brueder-riegler-gesmbH.gemeindeausstellung.at)

**Description:** Balcony railings



EXPANDED METAL Reference 26

**Project:** Terra Schwechat  
Non-Profit Housing  
Construction Company  
Residential Complex  
Am Frauenfeld  
2320 Schwechat  
Brauhausstr. 16a

**Material:** ProMetall expanded metal  
aluminium powder-coated, thickness 2mm  
mesh "Gumpoldskirchen"

**Metal manufacturer:** RLH Wiener Becken reg. GenmbH  
Stahl- & Metallbau Hrabal  
2523 Tattendorf  
[www.lagerhaus-wienerbecken.at](http://www.lagerhaus-wienerbecken.at)

**Architect:** Architekt DI Hermann Schmidt,  
2521 Trumau  
[www.architektschmidt.at](http://www.architektschmidt.at)

**Description:** Railings





EXPANDED METAL Reference 27

**Project:** Interio Moebelhaus, at SCS  
2331 Voesendorf

**Material:** ProMetall expanded metal  
aluminium powder-coated RAL3020,  
thickness 2 mm, mesh "Graz"

**Metal manufacturer:** Riegler Metallbau GmbH  
4400 Steyr, Wolfenstrasse 41, [www.riegler-metall.at](http://www.riegler-metall.at)

**Architect:** LIMIT architects  
1010 Vienna, Wollzeile 17, [www.limit.at](http://www.limit.at)

**Description:** Façade and expanded metal in the same colour  
as cladding for windows



EXPANDED METAL Reference 28

**Project: VFZ Linz**

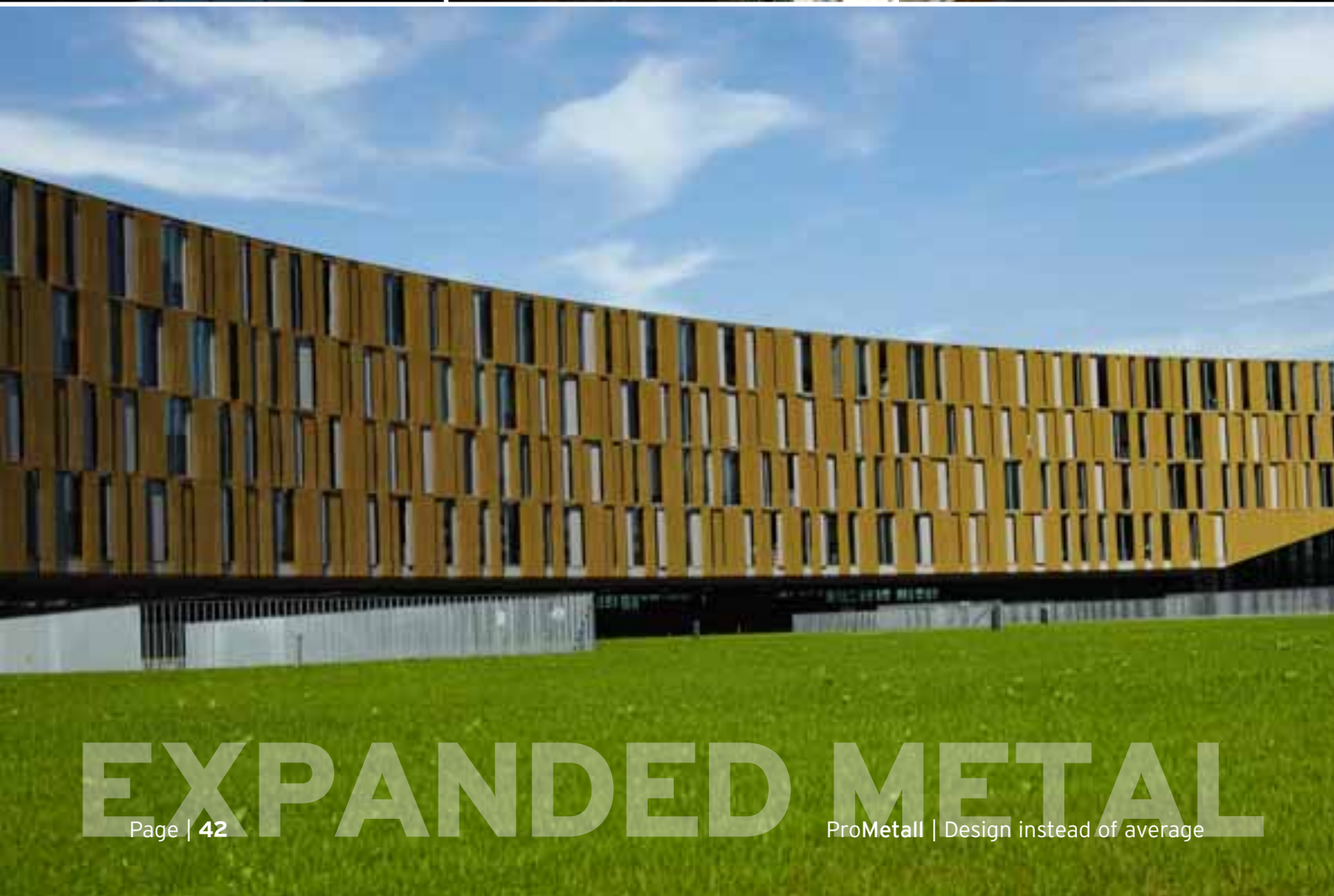
**Office Building Façade for the New  
Sales and Finance Centre of  
VOEST ALPINE AG, 4031 Linz**

**Material:** ProMetall expanded metal  
steel hot-dip-galvanised and powder-coated  
mesh "Feldkirch" - special edition

**Metal manufacturer:** Alu Sommer GmbH  
7344 Stoob, Industriestr. 6  
[www.alusommer.at](http://www.alusommer.at)

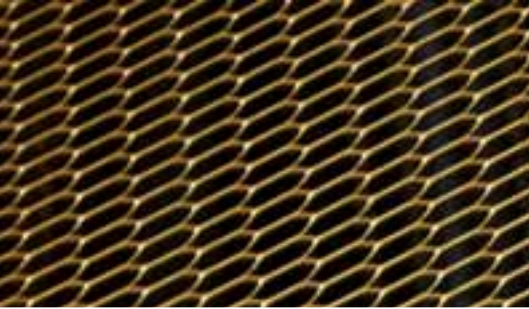
**Architect:** Feichtinger architects, Paris/Vienna  
[www.feichtingerarchitects.com](http://www.feichtingerarchitects.com)

**Description:** Façade  
electrical swivel slats



**EXPANDED METAL**





# EXPANDED METAL



EXPANDED METAL Reference 29

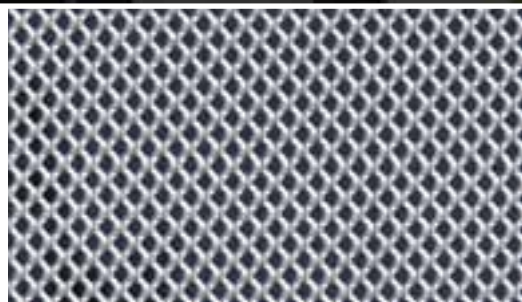
**Project:** Residential Complex  
Hoerbrannerstrasse  
6911 Lochau  
Pappelweg 1

**Material:** ProMetall expanded metal  
aluminium raw  
thickness 2 mm  
mesh "Round 7"

**Metal manufacturer:** Schnetzer Metallhandwerk  
6845 Hohenems, Riedstrasse 19  
[www.schnetzer-metall.at](http://www.schnetzer-metall.at)

**Architect:** BM Ing. Hanswerner Metzler  
6922 Wolfurt, Kreuzstr. 7  
[www.hans-werner-metzler.at](http://www.hans-werner-metzler.at)

**Description:** Balcony railings





EXPANDED METAL Reference 30

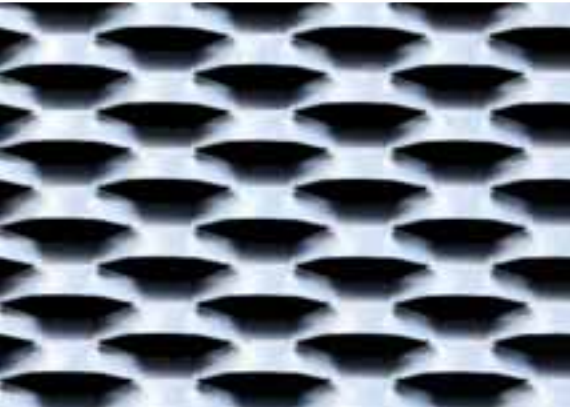
**Project: Residential Complex Fossilgasse 4  
8010 Graz**

**Material:** Aluminium raw, thickness 2 mm  
mesh "Leobersdorf"

**Metal manufacturer:** Schlosserei Kunstek GesmbH  
8020 Graz, Idlhofgasse 40

**Architect:** ArchX-Architekturbuero, 8010 Graz  
Raimundgasse 10, [www.archx.at](http://www.archx.at)

**Description:** Balcony railings







# EXPANDED METAL





EXPANDED METAL Reference 31

**Project:** SC Murpark  
8041 Graz-Liebenau  
Ostbahnstrasse 3

**Material:** ProMetall expanded metal  
hot-dip-galvanised  
thickness 1 mm  
mesh R 62 x 23 x 2.5 x 1 mm

**Metal manufacturer:** Strabag AG - Stahlbau  
vormals Metallbau Stoppacher GmbH  
8160 Weiz, Stahlstr. 1, [www.strabag.at](http://www.strabag.at)

**Architect:** ATP Planungs- und Beteiligungs-AG  
[www.atp.ag](http://www.atp.ag)

**Description:** Façade





# EXPANDED METAL





EXPANDED METAL Reference 32

**Project:** ASFINAG  
**ABM Bruck an der Mur-Frohnleiten  
Refurbishment/Addition  
Office Building**

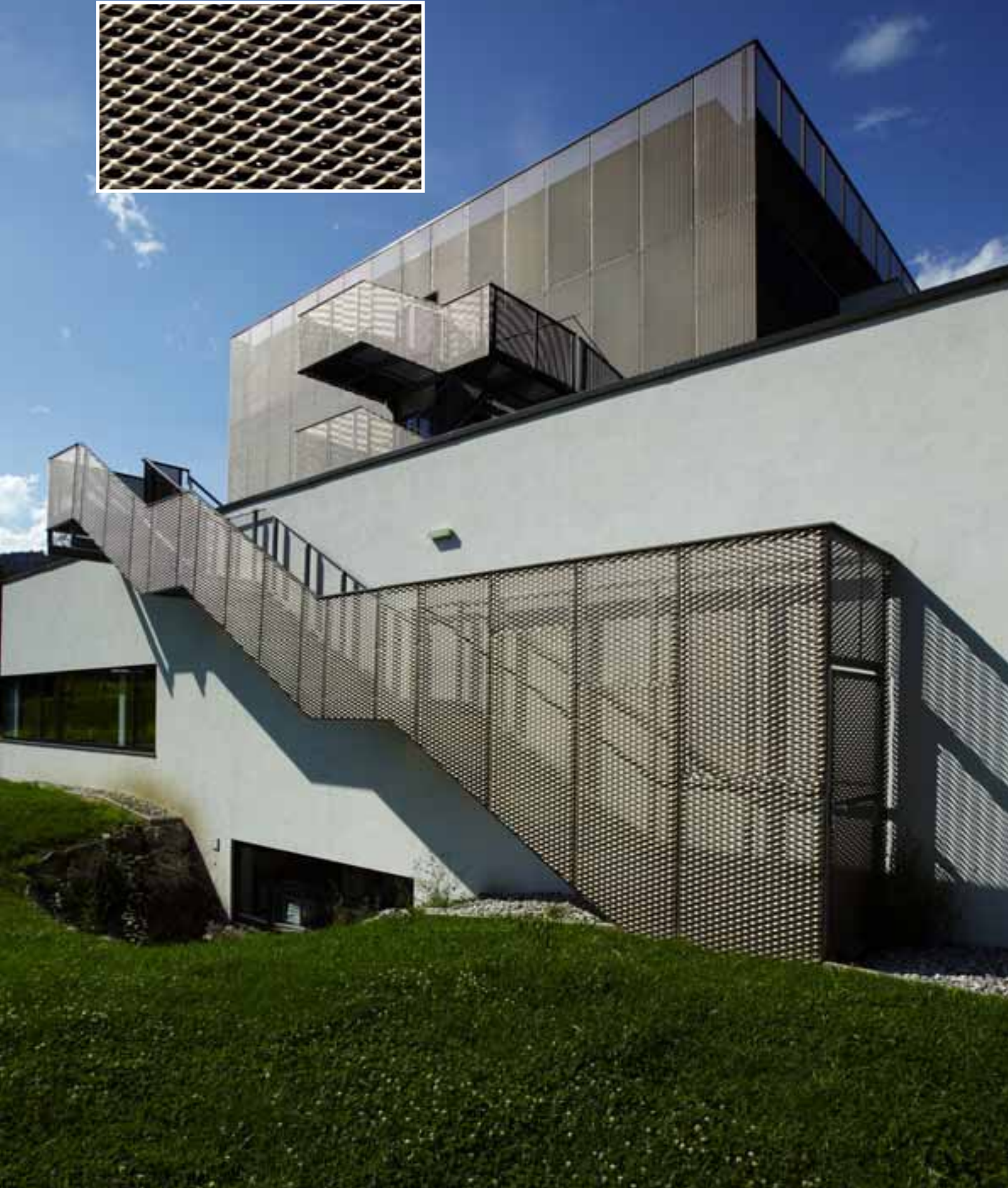
**Material:** ProMetall expanded metal  
aluminium powder-coated, thickness 1.5 mm  
mesh "Amstetten"

**Metal manufacturer:** Lenhardt Metallbau und Dachdecker GesmbH  
8600 Bruck an der Mur, Brandstetterstr. 30  
[www.lenhardt.at](http://www.lenhardt.at)

**Architect:** Architekturbuero W+G Wratschko  
8020 Graz, Grieskai 54, [www.arch-wratschko.at](http://www.arch-wratschko.at)

**Description:** Façade





# EXPANDED METAL



EXPANDED METAL Reference 33

**Project: Falkensteiner Hotel ASIA SPA Leoben  
8700 Leoben, In der Au 1**

**Material:** ProMetall expanded metal, aluminium anodised, thickness 2 mm, mesh "Ansfelden"

**Metal manufacturer:** A. Zoppoth Haustechnik GesmbH  
9634 Gundersheim, Gundersheim 35  
[www.zoppoth.net](http://www.zoppoth.net)

**Architect:** Architekt DI Arkan Zeytinoglu  
Zeytinoglu ZT GmbH, 1060 Vienna,  
Mariahilfer Strasse 101/3/51,  
[www.arkan.at](http://www.arkan.at)

**Description:** Façade





EXPANDED METAL Reference 34

**Project:** Car Park Planai  
8970 Schladming

**Material:** ProMetall expanded metal  
steel hot-dip-galvanised  
Mesh R 76 x 31 x 3 x 3 mm

**Metal manufacturer:** S. Jaritz Montage & Stahlbau GmbH  
8114 Friesach-Gratkorn, Dorfstrasse 3  
[www.jaritz.at](http://www.jaritz.at)

**Architect:** Hofrichter-Ritter ZT GmbH  
8010 Graz, Faerbergasse 6  
[www.hofrichter-ritter.at](http://www.hofrichter-ritter.at)

**Description:** Façade





# EXPANDED METAL

ProMetall | Design instead of average

Page | 53

EXPANDED METAL Reference 35

**Project: Residential Complex  
Am Birkengrund  
9073 Klagenfurt-Viktring**

**Material:** ProMetall expanded metal  
aluminium powder-coated, thickness 2 mm,  
mesh R 20 x 7 x 2 mm

**Metal manufacturer:** Schippel Stahl- und Alubau GmbH  
Bleiburgerstrasse 40  
9141 Eberndorf  
[www.s-a-s.at](http://www.s-a-s.at)

**Architect:** Architekt KRAINER ZT GmbH  
9020 Klagenfurt, Konradweg 3  
[www.krainerarchitect.at](http://www.krainerarchitect.at)

**Description:** Balcony railings







EXPANDED METAL Reference 36

**Project:** RBB Raiffeisenbank St. Veit  
9300 St. Veit an der Glan,  
Oktoberplatz 1

**Material:** ProMetall expanded metal  
aluminium raw, thickness 2 mm mesh  
"Graz"

**Metal manufacturer:** Reinhard Eder BlechbaugesmbH  
9100 Voelkermarkt  
Frankenweg 2  
[www.eder-blechbau.co.at](http://www.eder-blechbau.co.at)

**Architect:** Architekt Mag. Lothar Jell-Paradeiser  
2540 Bad-Voeslau  
Hanuschgasse 1a  
[www.jell-paradeiser.at](http://www.jell-paradeiser.at)

**Description:** Façade, bank



# ProMetall

ProMetall GmbH

Aumuehlstr. 14 (ARED-Park) • A-2544 Leobersdorf  
Tel.: +43 2256 62541-0 • Fax: Ext 20 or 22  
verkauf@prometall.at • www.prometall.at