

A photograph of a modern building facade. The building features a prominent corner section with a glass curtain wall. The main facade is composed of large, rectangular panels of reflective metallic material, likely aluminum, which shows a mix of silver and reddish-pink tones. The building is set against a clear blue sky. The overall design is clean and industrial.

ProMetall

Design instead of average

References 2006/2007

www.prometall.at

ProMetall

Design instead of average

At ProMetall our day-to-day life is determined by creativity. Yet, nowadays, creativity alone is not enough anymore. We realised long ago that individuality is key to our success and your success. This applies to the smallest filter or sound insulation element in the automotive sector, protective gratings for machines and complete façade designs. We score through creativity and individuality and work for you on a domestic and international basis. Our extensive product range, including a wide range of standard products, is a contributing factor. All these components ensure our success on the international competitors' market.

We are committed to the creative and specific implementation of customers' wishes; this is ensured by our five product categories perforated metal sheets, expanded metal, wire mesh, profile edgings and gratings. Our vast experience and years of professional know-how allow us to realise our partners' excellent ideas, especially those of architects. This ensures that our customers' visual and technical wishes are perfectly realised with attention to detail, our partners' attractive plans are precisely installed, and the parts are manufactured individually, visually attractive and with technical precision.

Products that are tailor-made for each client in accordance with smart designs: this ensures the success of our customers in the extensive metal-processing sector.

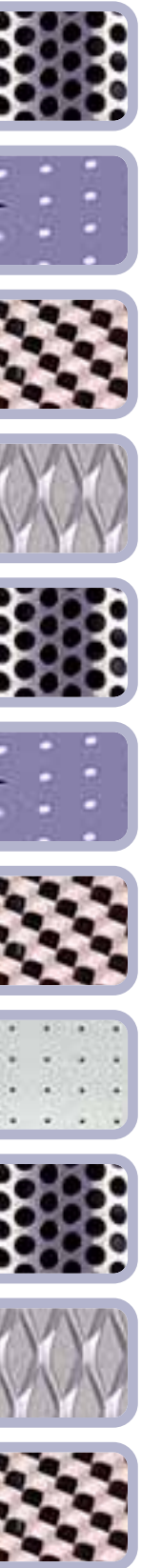
ProMetall stands for: Design instead of average



There are countless variations of colours and perforations.

Every project gets its tailor-made look.

DI Bertold Henzler, Berlin



Contents

ProMetall References 2006/07

PERFORATED METAL SHEET

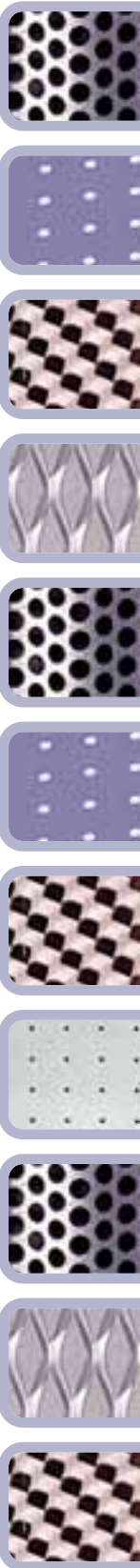
Reference 01	Project Air Cargo Center, Vienna	Page 04–05
Reference 02	Project Atrio Spar, Villach	Page 06–07
Reference 03	Project District Court West, Graz	Page 08–09
Reference 04	Project OeBB Train Station Meidling, Vienna	Page 10–11
Reference 05	Project Residential Complex Generali, Nussberggasse, Vienna	Page 12–13
Reference 06	Project Provincial Fire Brigade School, Tulln	Page 14–15
Reference 07	Project Residential Complex Heimat Oesterreich, Myslik Welsersstrasse, Salzburg	Page 16–17
Reference 08	Project Residential Complex Siegfriedgasse, Vienna	Page 18–19
Reference 09	Project Residential Complex Leopold, Leopoldsdorf	Page 20–21
Reference 10	Project Interspar, Hallein	Page 22–23

GRATINGS

Reference 10	Project Interspar, Hallein	Page 22–23
Reference 11	Project Tilak, Innsbruck	Page 24–25

EXPANDED METAL

Reference 12	Project Music School "Kloesterle", Landeck	Page 26–27
Reference 13	Project K&K Bank, Vienna	Page 28–29
Reference 14	Project Health Resort Bad Voeslau	Page 30–31
Reference 15	Project EFH Thalheimer, Moedling	Page 32–33
Reference 16	Project Trade Fair Dornbirn	Page 34–35
Reference 17	Project Municipal Utilities Fuerstenfeld	Page 36–37
Reference 18	Project Office Building Ebner, Leonding	Page 38–39
Reference 19	Project Polytechnic Campus Puch/Urstein	Page 40–41
Reference 20	Project Interspar, Schwaz	Page 42–43





PERFORATED METAL SHEET Reference 01

Project: Air Cargo Center
Airport Vienna

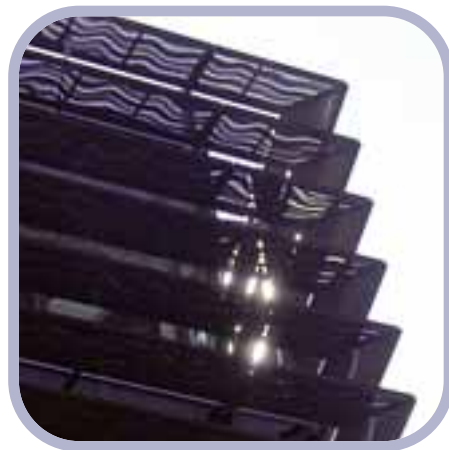
Material: Aluminium powder-coated
special perforation
Ru 5-13.9 + Ru 5-7.5mm

Metal manufacturer: Voran, Pichl

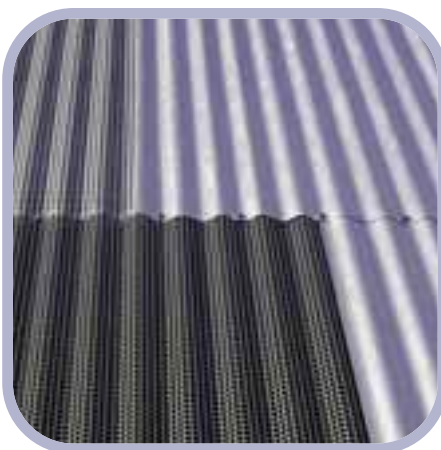
Architect: DI Andreas Treusch, 1070 Vienna

Description: Sun protection slats
precisely adjusted to the requirements -
stamped with individually adjusted special tools
= flexibility a la ProMetall





PERFORATED METAL SHEET



PERFORATED METAL SHEET Reference 02

Project: Atrio Spar
Shopping Center, Villach

Material: Make Kalzip stucco-designed,
partially perforated,
W18/76 by Corus Bausysteme, Linz

Metal manufacturer: Stoppacher Metalltechnik GmbH, Weiz

Architect: ATP, Innsbruck

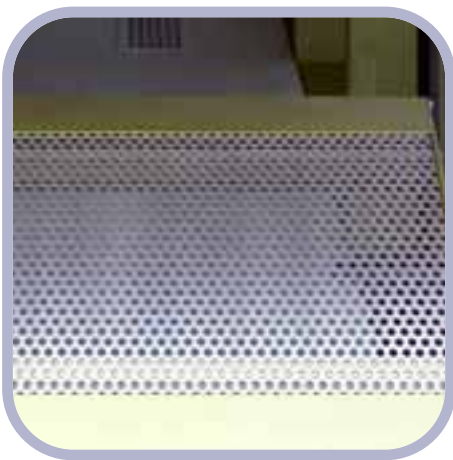
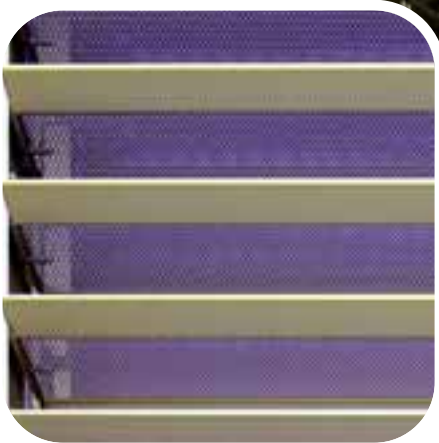
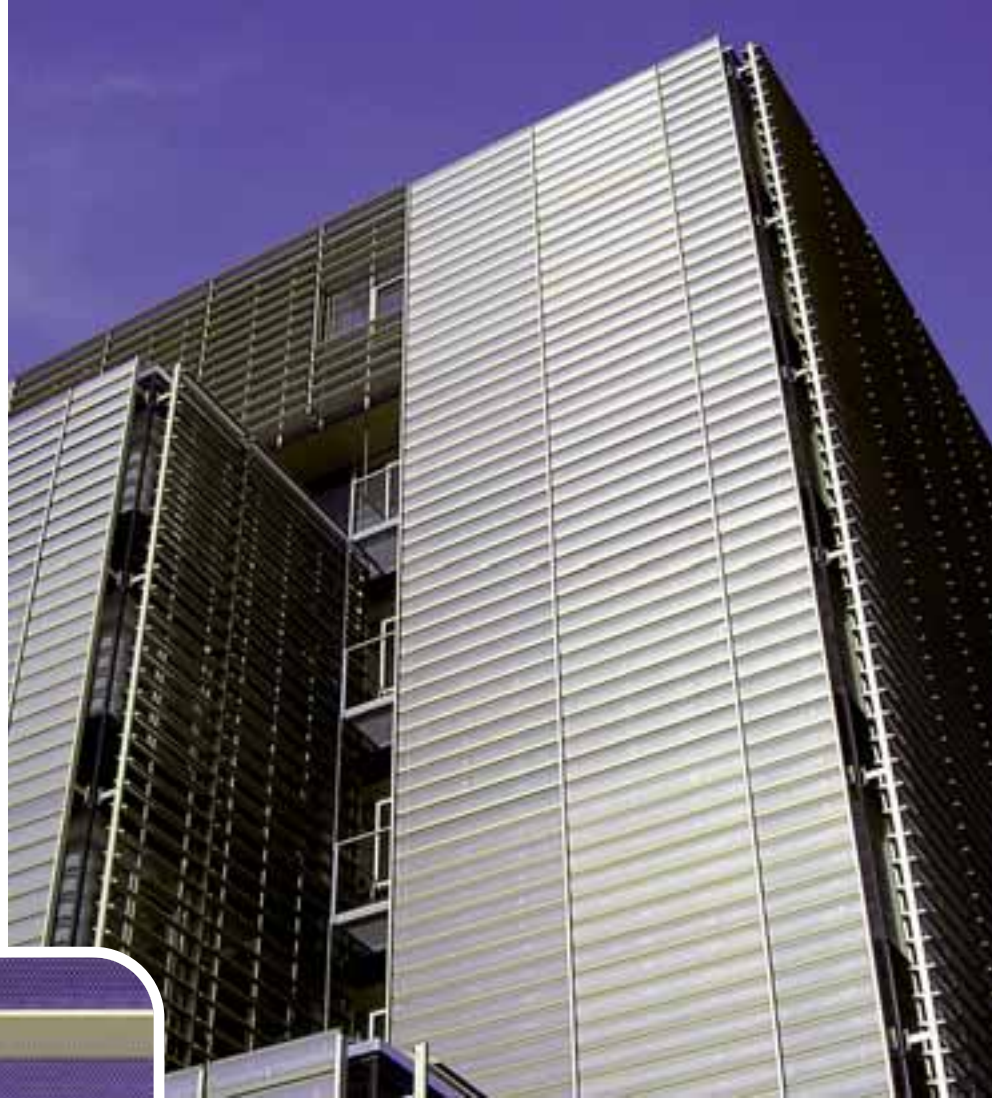
Description: Various perforations, subsequently
profiled into corrugated sheet metal,
well mixed; processed into one of
Austria's most original metal façades.

Additional info: ProMetall supplied only the railings -
perforated metal sheets made of
stainless steel (picture page 7 top
right). They were installed by Moertl,
Grafenstein.



PERFORATED METAL SHEET





PERFORATED METAL SHEET Reference 03

Project: District Court West, Graz

Material: Aluminium colour-anodised
special perforation Rt 5-8mm

Metal manufacturer: Colt Austria, Linz

Architect: Zeytinoglu, Vienna

Description: Modern elegance & technical
perfection = "no objection,
Your Honour"



PERFORATED METAL SHEET Reference 04

**Project: OeBB Train Station
Vienna Meidling**

Material: Aluminium powder-coated
Perforation: Ru 5-42mm, edged

Metal manufacturer: Eder, Voelkermarkt

Architect: DI Wech Hubert, 1130 Vienna

Description: Platform with high-tech look -
to be continued!







PERFORATED METAL SHEET

PERFORATED METAL SHEET Reference 05

Project: Generali Residential Complex
Nussberggasse, Vienna

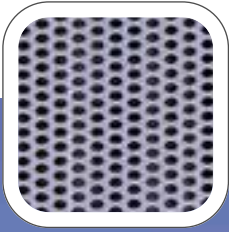
Material: Steel galvanised, powder coating
perforation Rt 8-12mm
borders not perforated, edged

Metal manufacturer: Wibeba Stahl- u. Alubau, Voestendorf

Architect: Hans Peter Petri, Vienna

Description: Posh modernity for Vienna's poshest
residential area - comprehensive cover
included (safety perforation)





PERFORATED METAL SHEET Reference 06

Project: Provincial Fire Brigade School Tulln

Material: Stainless steel polished special perforation Rt 20-30mm incl. special edging

Metal manufacturer: Stoppacher, Weiz

Architect: Maurer, Hollabrunn

Description: From planning, to tendering and to the most challenging, perfect implementation - ProMetall fire service's "highlight".







PERFORATED METAL SHEET Reference 07

Project: Heimat Oesterreich,
Myslik Residential Complex
Welserstrasse, Salzburg

Material: Stainless steel bright
perforation Rt 5-8mm

Metal manufacturer: Praeuer, St. Johann

Architect: one room architektur
Huber/Meinhart, Salzburg

Description: just in time - when the price of stainless
steel was still a third of the current price ...
regular standard can be that beautiful



PERFORATED METAL SHEET Reference 08

Project: Residential Complex
Siegfriedgasse, Vienna

Material: Embossed metal sheets aluminium
Cu 20-50mm

Metal manufacturer: Nikitscher, St. Michael

Architect: Sanierung NEUES LEBEN,
1100 Vienna

Description: Social housing - dressed up with
pressed aluminium by
ProMetall - who would pay
attention to this building
without it?





PERFORATED METAL SHEET

ProMetall | Design instead of average

Page | 19



PERFORATED METAL SHEET Reference 09

Project: Residential Complex
Leopold 40 Leopoldsdorf,
Lower Austria

Material: Steel galvanised, powder coating,
perforation Ru 50-200mm

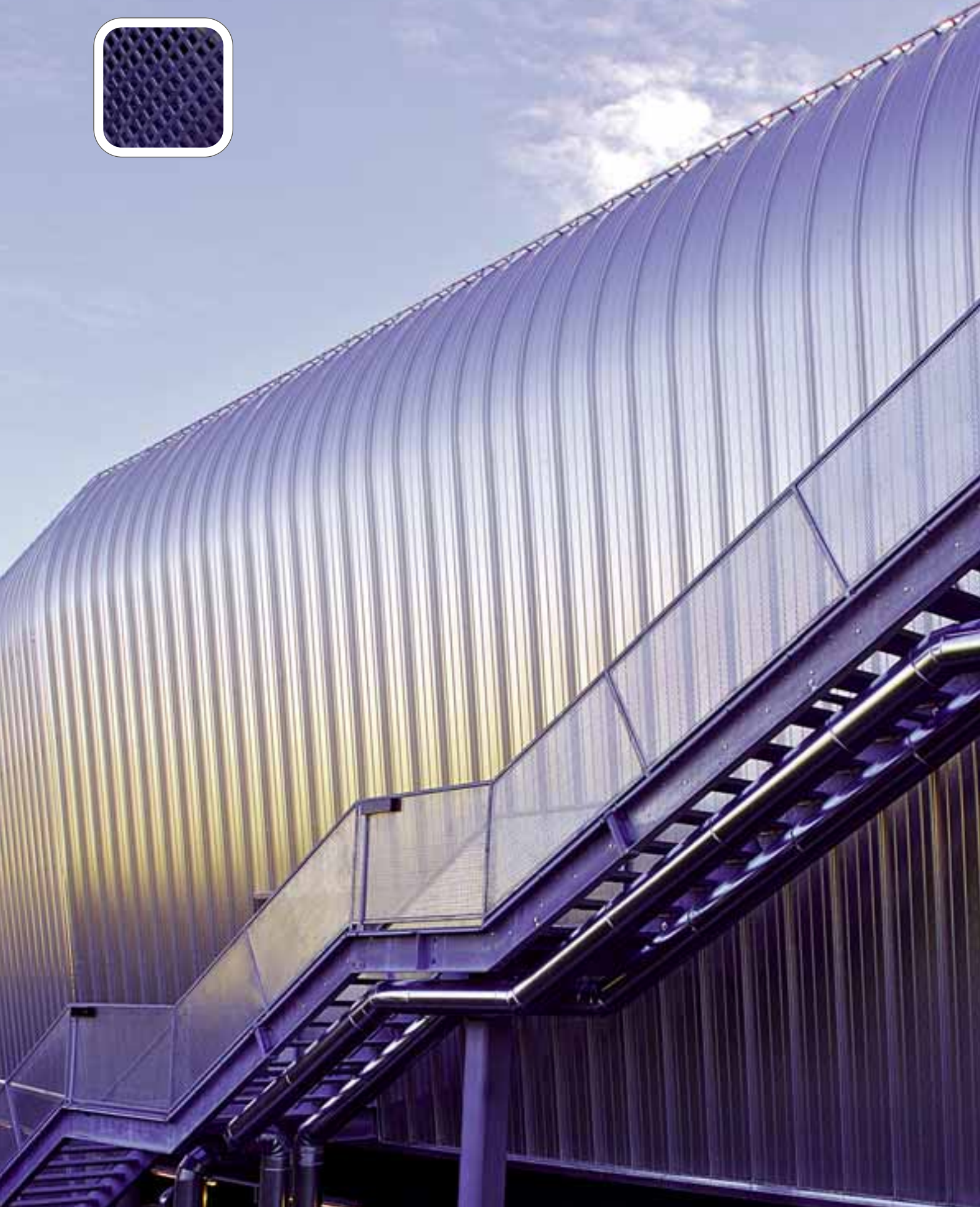
Metal manufacturer: Vorreiter, Friesach

Architect: Hadler bis Hausdorf
Kaltenleutgeben

Description: Finally, nice, BIG holes! Located
at a beautiful bathing lake - no jumping
from the top please!



PERFORATED METAL SHEET



PERFORATED METAL SHEET

PERFORATED METAL SHEET
GRATINGS Reference 10

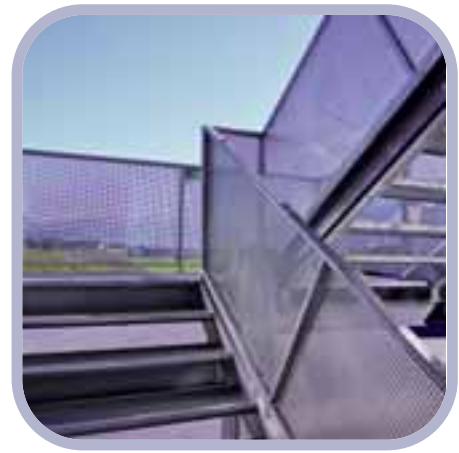
Project: Interspar Hallein

Material: Steel-galvanised
perforation Rt 8-12 / Cu 10-15mm
+ custom-made gratings steel
K60/St52, hot-dip-galvanised

Metal manufacturer: Kremser, Wolfsberg

Architect: Klaus Franzmair, Salzburg

Description: A truly beautiful back!
Cool supermarket rear - accessible
via statically unbeatable stairtread
gratings by ProMetall.





GRATINGS



GRATINGS
EXPANDED METAL Reference 11

Project: Tilak, Innsbruck

Material: Aluminium raw
mesh 62x27mm
+ custom-made gratings steel
K60/St 52, hot-dip-galvanised

Metal manufacturer: Peneder, Atzbach

Architect: Arch. Peter P. Pontiller, Innsbruck

Description: It looks as if someone had wrapped a net around the fire escape tower- transparent, yet safe!
Perfect combination of two ProMetall products.



GRATINGS



EXPANDED METAL



EXPANDED METAL Reference 12

Project: Music School "Kloesterle"
Landeck

Material: Copper raw
mesh "Gumpoldskirchen"

Metal manufacturer: SFL, Stallhofen

Architect: Ostertag architekten, Vienna

Description: Mozart would have enjoyed it...
No doubt, big and small Amadeus
alike are queuing to make music
in this beautiful school.





EXPANDED METAL Reference 13

Project: K&K Bank, Vienna

Material: Stainless steel pickled gratings type "Feldkirch"

Metal manufacturer: Raditsch, Purbach

Architect: hop-architektur, 1010 Vienna

Description: No - not a trade union company flat: not to be outdone when it comes to elegance and (slip-) safety, expanded metal at the highest level!







EXPANDED METAL Reference 14

Project: Health Resort, Bad Voeslau

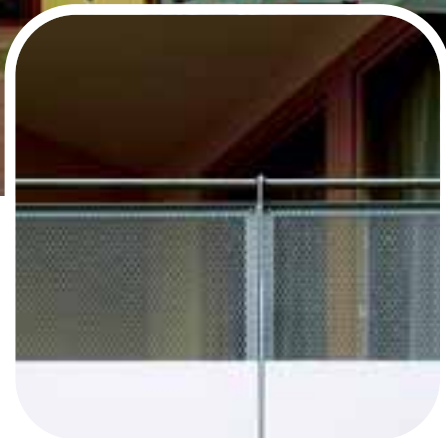
Material: Steel - hot-dip-galvanised
mesh 43x17mm

Metal manufacturer: Heidenbauer & Blaha, Wr. Neudorf

Architect: Michael Cede, Innsbruck

Description: Expanded metal - guard rail by
ProMetall - ensures your safety in
Lower Austria after draining therapy
and a glass of wine in the evening ...





EXPANDED METAL



EXPANDED METAL Reference 15

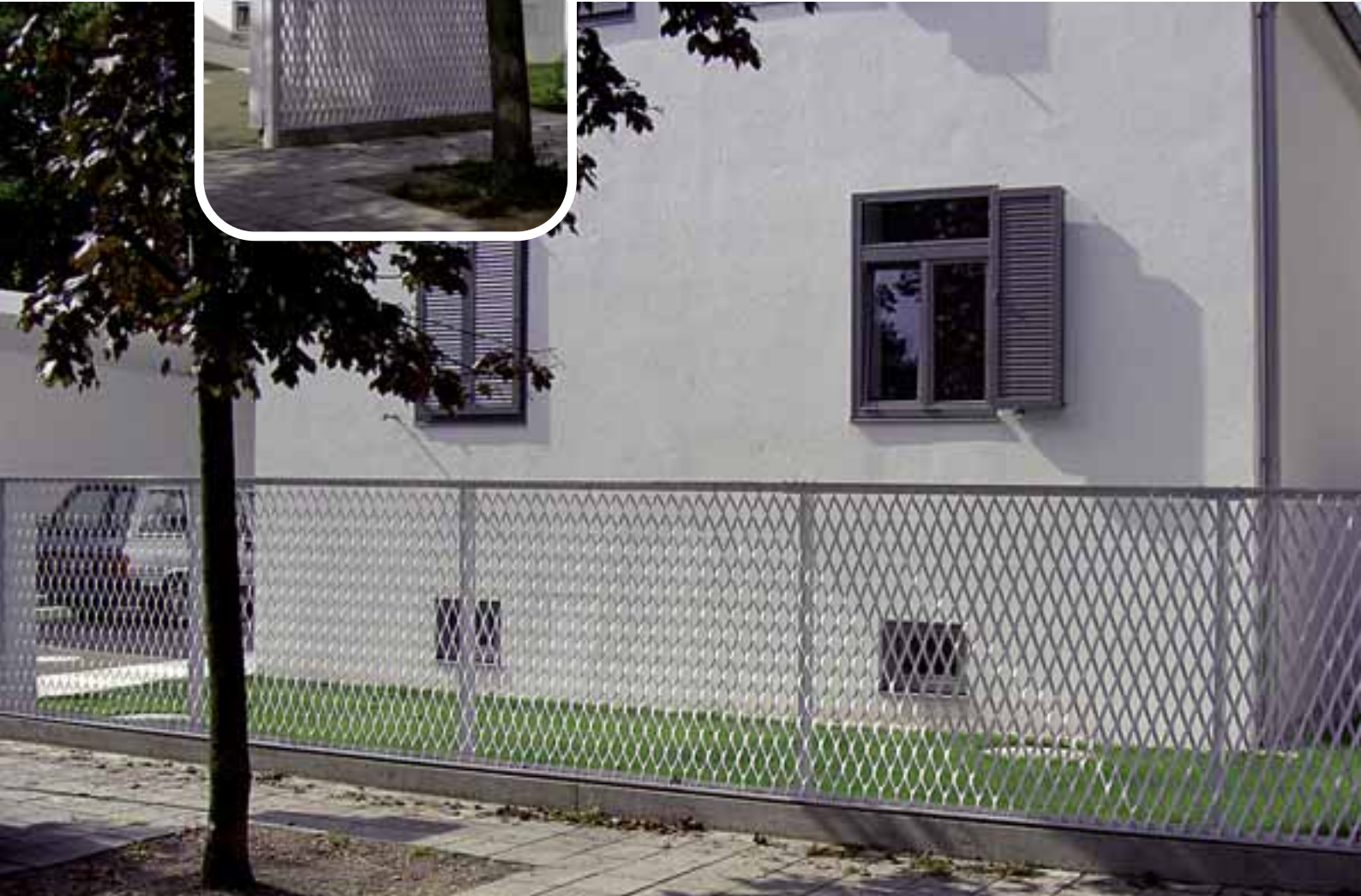
Project: Family Home Thalheimer Moedling

Material: Aluminium - powder-coated
mesh "Celje"

Metal manufacturer: Wittman, Leopoldsdorf

Architect: Delugan Meissl, Vienna

Description: Modern expanded-metal fences look like this!
A different look from every angle! As you walk past,
transparency turns into visual protection!



EXPANDED METAL



EXPANDED METAL



EXPANDED METAL Reference 16

Project: Trade Fair Dornbirn

Material: Aluminium-anodised mesh "special type" individual

Metal manufacturer: Manahl, Bludenz

Architect: Atelier Rainer+Amann, Tisis

Description: Yet more proof of ProMetall's flexibility. The mesh was specially designed for this project. Individuality "made in Austria" - implemented by Manahl & ProMetall.



EXPANDED METAL Reference 17

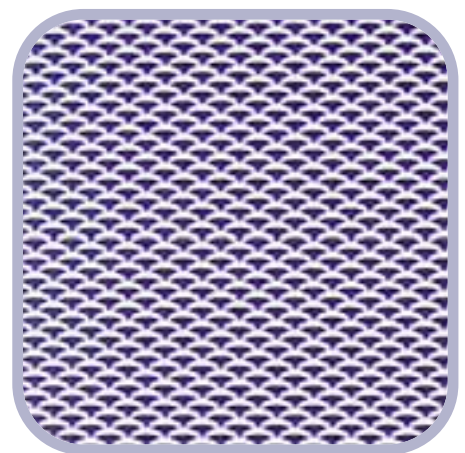
Project: Municipal Utilities
Fuerstenfeld

Material: Aluminium raw
mesh "Lustenau"

Metal manufacturer: Sorger, Loipersdorf

Architect: Boder, Fuerstenfeld

Description: A light, modern touch for a historic
building in the course of refurbishment -
consultation by ProMetall -
implementation by Boder & Sorger.





EXPANDED METAL



EXPANDED METAL

EXPANDED METAL Reference 18

Project: Office Building Ebner,
Leonding

Material: Aluminium-anodised
mesh "Amstetten"

Metal manufacturer: Sauritschnig, St. Veit

Architect: Gruendlinger & Rath, 4020 Linz

Description: It's hot in there - this is where industrial
ovens for the whole world are made; even
cooler on the outside - the expanded-metal
facade by ProMetall - adjusted to the
principal's "customer-oriented further
development and tailor-made solutions"





EXPANDED METAL Reference 19

**Project: Polytechnic Campus, Puch/Urstein
Student Residence**

Material: Steel - hot-dip-galvanised
mesh 43x17mm

Metal manufacturer: BedachungsgesmbH, Salzburg

Architect: Kada-Wittfeld, BRD

Description: As cool as it gets - an investment in our future experts
and managers; even better than at Mum & Dad's.





EXPANDED METAL



EXPANDED METAL Reference 20

Project: Interspar, Schwaz

Material: Steel-galvanised + powder coating mesh "Gumpoldskirchen"

Metal manufacturer: Moertl, Grafenstein

Architect: ATP, Innsbruck

Description: There is a reason the SPAR-Group is known for its innovative, open access to modern architecture, implemented with one of the latest ProMetall products.





INTERSPAR

EXPANDED METAL



ProMetall

ProMetall GmbH

A-2544 Leobersdorf | Aumuehlstr.14
T.: +43 2256 / 62541-0 | F.: Ext 22 or 20
verkauf@prometall.at | www.prometall.at