

*ProMetall*

Design instead of average



# ProMetall

## Design instead of average

In our fast-paced world, creativity alone is not enough anymore. From the the smallest filter or sound insulation element in the automotive sector, protective gratings for machines to complete façade designs: individuality is essential as a complementary component; in this respect, ProMetall scores on a domestic and international level. At the same time, we assert our position in the international competitors' market via our extensive product range.

Thanks to our five product categories perforated metal sheet, expanded metal, wire mesh, profile edgings and gratings, ProMetall is able to realise all customer wishes creatively and individually. This allows us to perfectly and precisely realise our partners' excellent ideas, especially architects' ideas. Our winning formula: we respond to our customer's visual and technical wishes in detail, we implement the planner's interesting ideas with perfect attention to detail, and we manufacture the parts individually, visually attractive and with absolute precision.

Ultimately, these points ensure the success of our customers in the extensive metal-processing sector: tailor-made products, manufactured in accordance with carefully designed plans, for every customer.

ProMetall stands for: **Design instead of average**



**The look changes depending on the light incidence and animates the surfaces throughout the day.**

**Slim constructions thanks to good static characteristics and low weight**





**The people at ProMetall prove again and again that flexibility and competence are not restricted to large, international groups' advertising campaigns.**

**ProMetall - unfailing Austrian reliability.**



Master locksmith Stickler, Deutschkreuz

# Contents

## ProMetall References 2004/05

### PERFORATED METAL SHEET

Reference 01	Project Fleck, Vienna	Page 04
Reference 02	Project Farmers' Social Security Institute, Baden	Page 05
Reference 03	Project Thermal Bath Stegersbach	Page 06
Reference 04	Project Vogewosi, Bregenz	Page 07
Reference 05	Project OeBB Train Station Leoben	Page 08-09
Reference 06	Project Car Park, Vienna	Page 10
Reference 07	Project Municipality Sollenau	Page 11
Reference 08	Project Travel Europe, Stans	Page 12-13

### EXPANDED METAL

Reference 01	Project School Zell, Gurnitz	Page 14
Reference 02	Project Inntalcenter, Telfs	Page 15
Reference 03	Project Steinbock, Innsbruck-Rum	Page 16-17
Reference 04	Project M-Preis, Schwaz	Page 18
Reference 05	Project OeBB Train Station Wels	Page 19
Reference 06	Project BTV Innsbruck	Page 20-21
Reference 07	Project Brewery Freistadt	Page 22
Reference 08	Project Hanson Centre Vienna	Page 23
Reference 09	Project Judiciary Centre Leoben	Page 24-25
Reference 10	Project Trade Fair Freistadt	Page 26

### GRATINGS

Reference 01	Project Car Park Beiersdorf	Page 27
Reference 02	Project Magna, Graz	Page 28
Reference 03	Project Inntalcenter, Telfs	Page 29
Reference 04	Project ICT-Uni, Innsbruck	Page 30
Reference 05	Project Private, Salzburg	Page 31





PERFORATED METAL SHEET Reference 01

**Project:** Fleck, Vienna  
Office building, warehouse

**Material:** Stainless steel IIIrd  
perforation RU 40

**Metal manufacturer:** Kusolitsch, Wr. Neudorf

**Architect:** Planungsbuero Wimreiter, Vienna





PERFORATED METAL SHEET Reference 02

**Project:** Farmers' Social Security Institute, Baden Kurheim

**Material:** Aluminium powder-coated perforation Rt 10-15

**Metal manufacturer:** Trummer, Bad Gleichenberg

**Architect:** Nuhsbaumer-Charamza



PERFORATED METAL SHEET



PERFORATED METAL SHEET Reference 03

**Project:** Thermal Bath Stegersbach Hotel

**Material:** Steel-anodised powder-coated perforation Rt 8-12

**Metal manufacturer:** Kamper, Gloggnitz

**Architect:** DI Anton Mayerhofer, 1120 Vienna

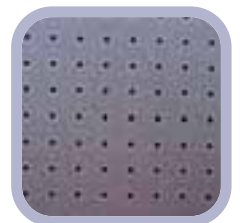


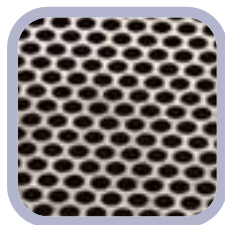
PERFORATED METAL SHEET Reference 04

**Project:** Vogewosi, Bregenz  
Non-profit Residential Complex

**Material:** Aluminium anodised  
perforation Ru 5-25

**Metal manufacturer:** Klocker, Dornbirn





# PERFORATED METAL SHEET





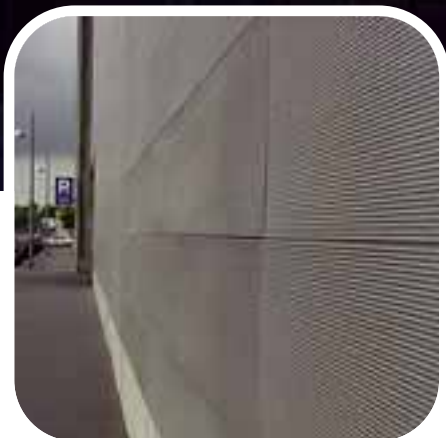
PERFORATED METAL SHEET Reference 05

**Project: OeBB Train Station  
Leoben**

**Material:** Stainless steel polished  
perforation Rt 25-32

**Metal manufacturer:** Alu-Systems, St.Michael

**Architect:** Ostertag & Gaisrucker



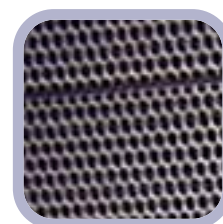
PERFORATED METAL SHEET Reference 06

### Project: Car Park, Vienna

**Material:** Steel-galvanised powder-coated perforation Rt 8-10

**Metal manufacturer:** Dobmeier, Leopoldsdorf

**Architect:** Schwalm-Theiss & Gressenbauer





PERFORATED METAL SHEET Reference 07

**Project:** Municipality Sollenau  
Communal Housing Project

**Material:** Steel-galvanised + special coating  
perforation Rt 15-20

**Metal manufacturer:** Beer, Sollenau

**Architect:** Marosevic, Hinterbruehl



PERFORATED METAL SHEET Reference 08

**Project:** Travel Europe, Stans  
Office building

**Material:** Aluminium raw  
perforation Rt 10-12

**Metal manufacturer:** Lintner, Schwaz

**Architect:** Oskar Leo Kaufmann, Dornbirn



# PERFORATED METAL SHEET



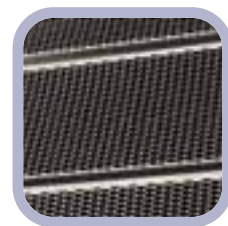
EXPANDED METAL Reference 01

**Project: School Zell, Gurnitz**

**Material:** Aluminium powder-coated mesh PM5

**Metal manufacturer:** Eder, Voelkermarkt

**Architect:** Dominikus, Klagenfurt





EXPANDED METAL Reference 02

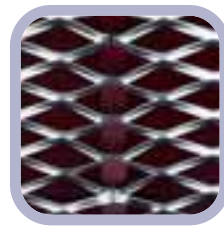
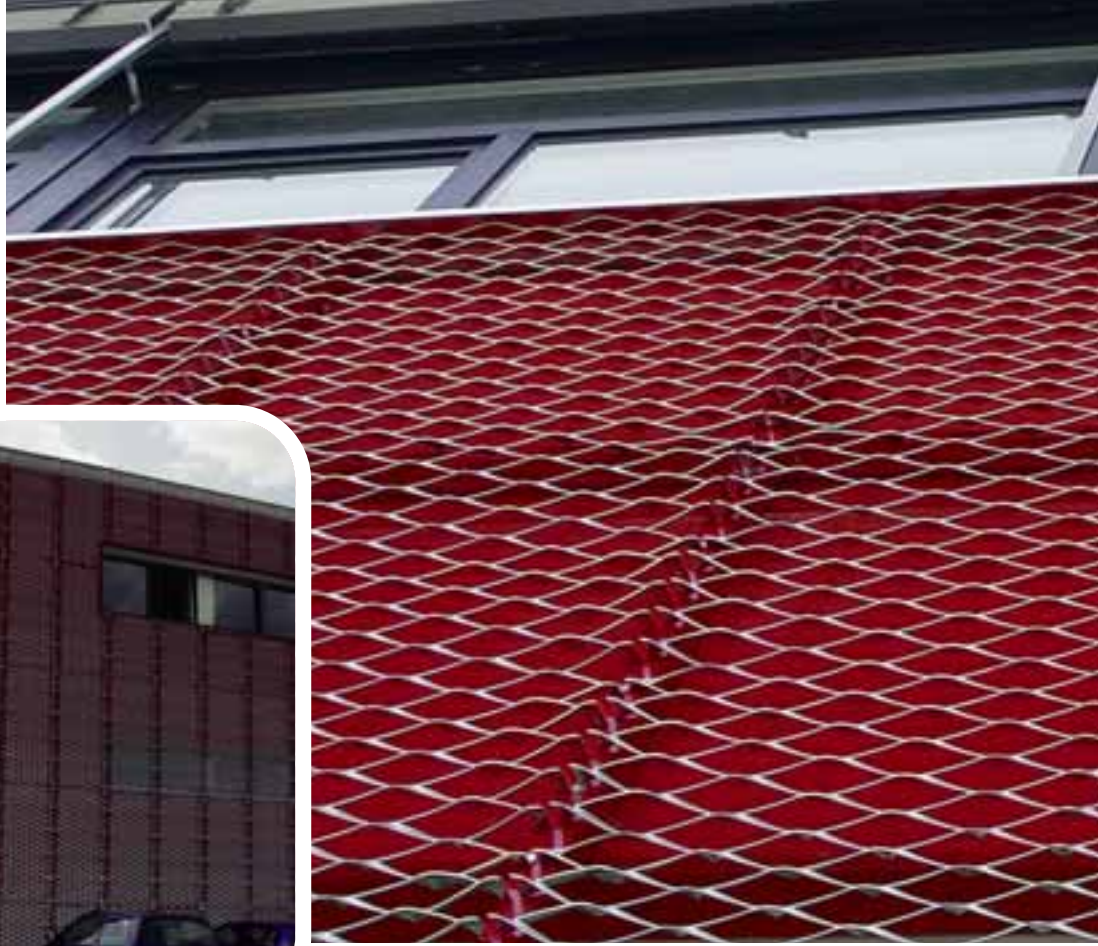
**Project: Inntalcenter, Telfs**

**Material:** Steel hot-dip-galvanised mesh 62x23

**Metal manufacturer:** Leha, Telfs

**Architect:** DI Armin Walch, Reutte





# EXPANDED METAL





EXPANDED METAL Reference 03

**Project:** Steinbock, Innsbruck-Rum  
Office building, warehouse

**Material:** Aluminium raw  
mesh PM200

**Metal manufacturer:** Kohlegger, Innsbruck

**Architect:** Giner & Wucherer, Innsbruck



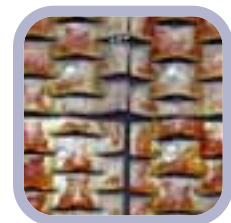
EXPANDED METAL Reference 04

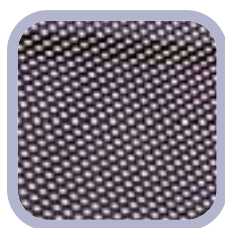
**Project:** M-Preis, Schwaz

**Material:** Corten-steel mesh "Amstetten"

**Metal manufacturer:** Lintner, Schwaz

**Architect:** Stoeger-Zelger, Innsbruck





EXPANDED METAL Reference 05

## Project: OeBB Train Station Wels

**Material:** Stainless steel  
mesh 10x5.8

**Metal manufacturer:** Strabag, Linz

**Architect:** Luger & Maul, Wels





EXPANDED METAL Reference 06

### Project: BTV Innsbruck

**Material:** Bronze metal mesh "Amstetten"

**Metal manufacturer:** Anker, Hall

**Architect:** Vogl-Fernheim, Innsbruck





# EXPANDED METAL



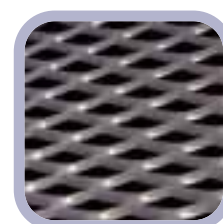
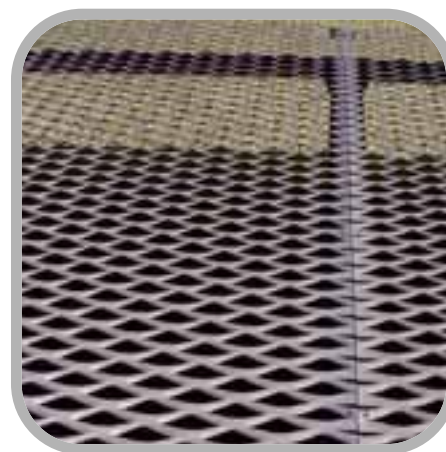
EXPANDED METAL Reference 07

**Project: Braucommune Freistadt**

**Material:** Aluminium powder-coated mesh "Amstetten"

**Metal manufacturer:** Ransmayr, Rohrbach

**Architect:** Hackl, Freistadt





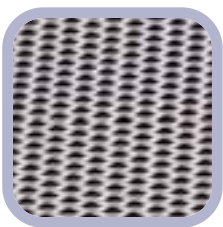
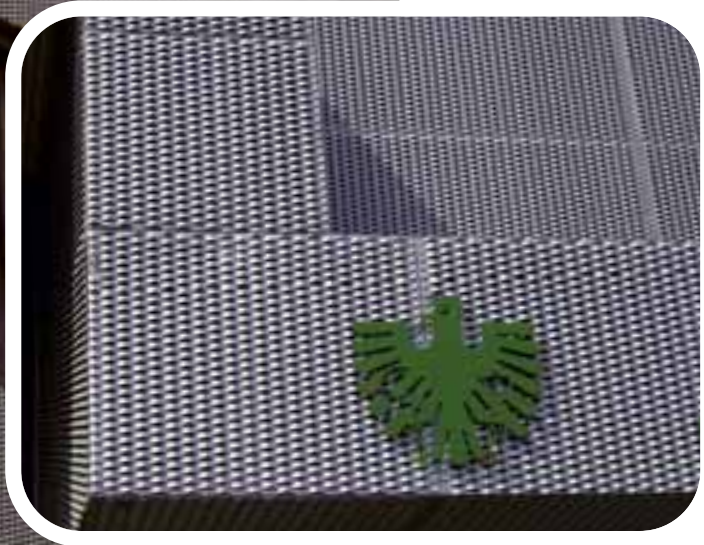
EXPANDED METAL Reference 08

**Project:** Hanson Centre, Vienna Shopping mall

**Material:** Aluminium powder-coated mesh "Enns"

**Metal manufacturer:** Pfeiffer, Wels

**Architect:** Atelier Buegelmayer, Vienna



# EXPANDED METAL





EXPANDED METAL Reference 09

**Project: Judiciary Centre Leoben  
Prison**

**Material:** Aluminium anodised  
mesh "Innsbruck"

**Metal manufacturer:** SFL, Stallhofen

**Architect:** Hohensinn-Architektur



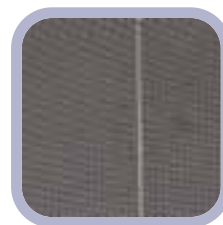
EXPANDED METAL Reference 10

**Project: Trade Fair Freistadt**

**Material:** Stainless steel  
mesh 20x7

**Metal manufacturer:** Ransmayr, Rohrbach

**Architect:** Hackl, Freistadt





GRATINGS Reference 01

**Project:** Car park Beiersdorf

**Material:** Steel-K60 hot-dip-galvanised  
powder-coated  
mesh 30x60

**Metal manufacturer:** Regel

**Architect:** Helling & Neuhaus

# GRATINGS



GRATINGS Reference 02

**Project: Magna, Graz**  
**Warehouse for spare parts**

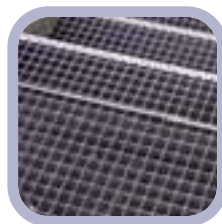
**Material:** Steel-K60 hot-dip-galvanised

**Metal manufacturer:** Mecalux, Guntramsdorf

**Architect:** ProMetall



# GRATINGS



GRATINGS Reference 03

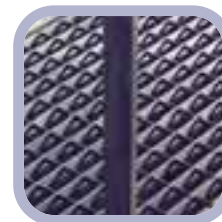
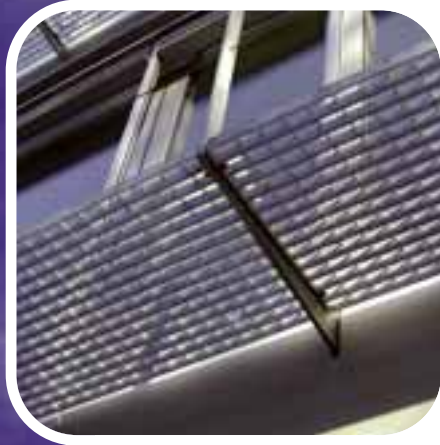
## Project: Inttalcenter, Telfs

**Material:** Steel-K60 hot-dip-galvanised type 50x3

**Metal manufacturer:** Leha, Telfs

**Architect:** DI Armin Walch, Reutte

# GRATINGS



GRATINGS Reference 04

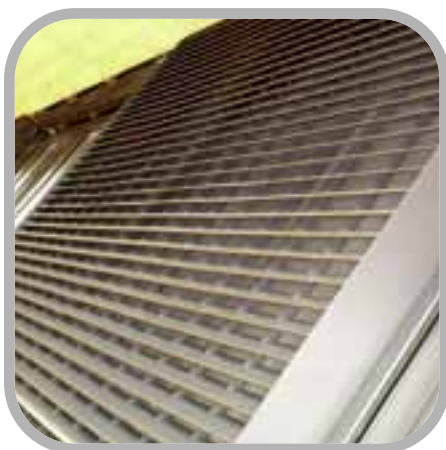
**Project:** ICT-Uni, Innsbruck

**Material:** Steel-K60 hot-dip-galvanised  
type 44x66

**Metal manufacturer:** Starmann, Klagenfurt

**Architect:** DI Obermoser, Innsbruck

# GRATINGS



GRATINGS Reference 05

**Project:** Private, Salzburg

**Material:** ProMetall louvre gratings powder-coated

**Metal manufacturer:** ProMetall

**Architect:** ProMetall



# GRATINGS



**ProMetall**

**ProMetall GmbH**

A-2544 Leobersdorf | Aumuehlstr.14  
T.: +43 2256 / 62541-0 | F.: Ext 22 or 20  
verkauf@prometall.at | www.prometall.at